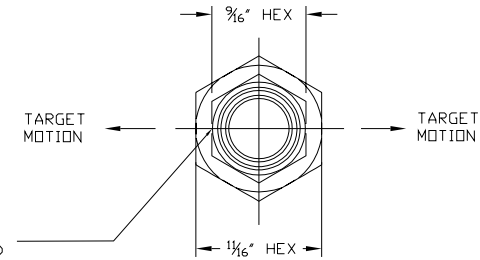
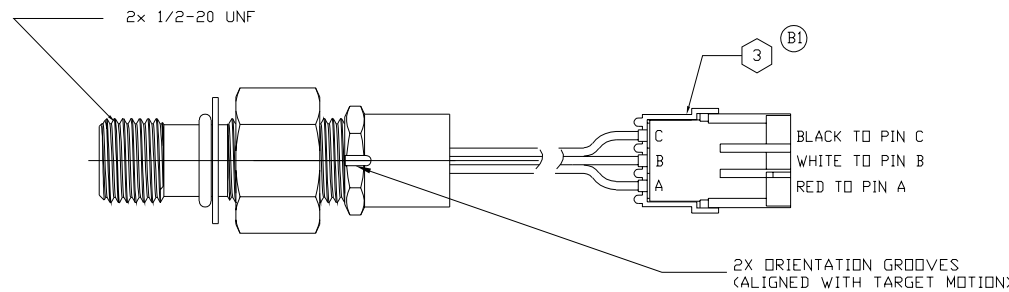


REV	DESCRIPTION	BY	CHK	DATE	ECN / MPS
A	ENGINEERING RELEASE	SSD		9-24-10	0048350
B	-1<3D> FLAG NOTE ③ WAS ② -2<1A>ADDED ENGR INITIAL AND DATE IN TITLE BLOCK	NR1		10-20-10	0027986

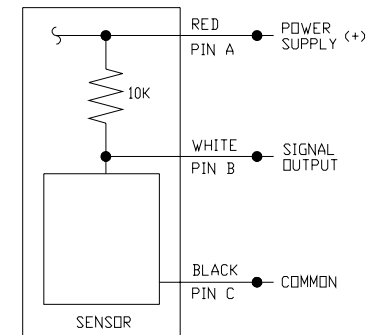


#### NOTES:

1 SUPPLY VOLTAGE: (V<sub>s</sub>) 8 TO 28 Vdc (FUNCTIONAL RANGE)  
SUPPLY CURRENT: (I<sub>s</sub>) 20mA (INCLUDING INTERNAL PULL-UP RESISTOR)

2 18 AWG PVC-SINGLE CONDUCTOR WIRES PER AWM 1015/1032 RATED AT 105°C  
1 BLACK TO PIN C , 1 RED TO PIN A, 1 WHITE TO PIN B

③ PACKARD ELECTRIC WEATHER PACK SERIES  
12010717 SHROUD CONNECTOR (BLACK WITH INDEX CODE 101)  
12015323 SEAL (3X)  
12089040 MALE TERMINAL (3X) (MATES WITH 12015793, CONNECTOR AND 12089188, SLEEVE (FEMALE) TERMINAL)



OUTPUT CIRCUIT  
WIRING INSTRUCTIONS

CS REVIEWED FOR CLASSIFICATION PER ESP-042

UNLESS OTHERWISE SPECIFIED ALL DIMENSIONS ARE IN INCHES MILLIMETERS (INCHES)		DRAWING BASED ON ANSI Y14.5M-1982 EATON CORPORATION - CONFIDENTIAL AND PROPRIETARY NOTICE TO PERSONS RECEIVING THIS DRAWING AND / OR TECHNICAL INFORMATION THIS DOCUMENT, INCLUDING THE DRAWING AND INFORMATION CONTAINED THEREON, IS CONFIDENTIAL AND IS THE EXCLUSIVE PROPERTY OF EATON CORPORATION, AND IS LOANED AND SUBJECT TO RECALL BY EATON AT ANY TIME BY FACING POSSESSION OF THIS DOCUMENT. THE RECIPIENT ACKNOWLEDGES AND AGREES THAT THIS DOCUMENT CANNOT BE USED IN ANY MANNER ADVERSE TO THE INTERESTS OF EATON, AND THAT NO PORTION OF THIS DOCUMENT MAY BE REPRODUCED OR TRANSMITTED IN ANY FORM OR BY ANY MEANS, WITHOUT THE WRITTEN PERMISSION OF EATON. IN THE CASE OF CONFLICTING CONTRACTUAL PROVISIONS, THIS NOTICE SHALL GOVERN. COPYRIGHT 2008 EATON CORPORATION - ALL RIGHTS RESERVED. USA	
TOLERANCES X ± .005 XX ± .003 XXX ± .001 ≤ ± 1°		DRAWN BY/DATE SSD 9-24-10 CHECKED BY/DATE HRC 9-24-10 ENGR BY/DATE TDD 9-24-10 METALLURGY BY/DATE	
UNSPECIFIED RADI ARE: UNSPECIFIED DRAFT ANGLES ARE: C SIZE		MATERIAL/HEAT TREAT TITLE SPEED SENSOR NUMBER 6026077-001_C SCALE 2/1 SHEET 1 OF 1	
THIRD ANGLE PROJECTION DO NOT SCALE		MATHMETICAL AVERAGE	