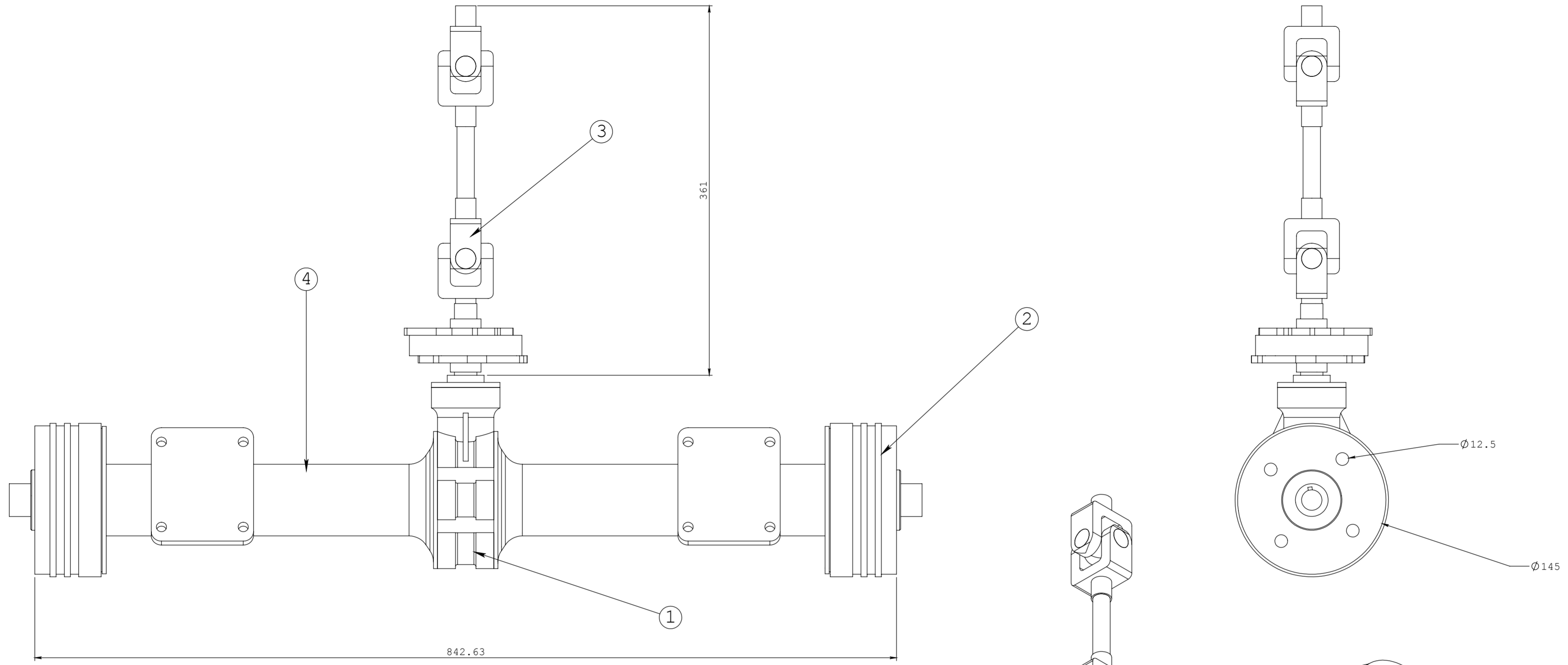


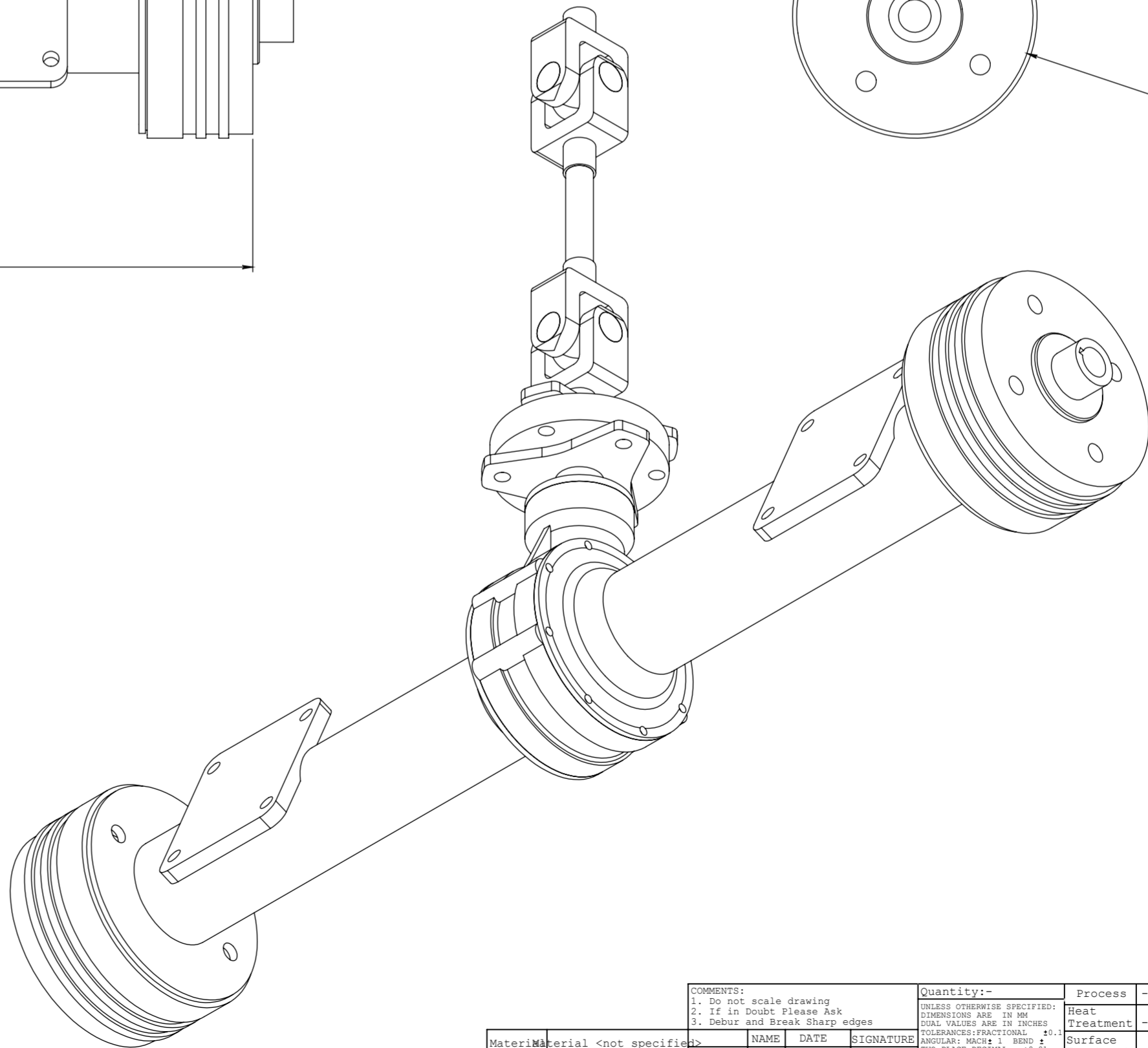
PROPRIETARY AND CONFIDENTIAL
 THE INFORMATION CONTAINED IN
 THIS DRAWING IS THE SOLE PROPERTY
 OF REDLANDS ASHLYN MOTORS PLC. AND
 MAY NOT BE REPRODUCED, COPIED,
 TRANSMITTED IN ANY FORM OR AS A WHOLE
 WITHOUT THEIR WRITTEN CONSENT.

REVISIONS				
ZONE	REV.	DESCRIPTION	DATE	APPROVED
	0	FIRST RELEASE	12/05/2012	



NOTE : -
 FINAL DRIVE RATIO : 1:0.32 (REDUCTION)
 WHEEL TRACK CAN VARY UP TO 900

SLNO	PART	QTY
1	DIFFERENTIAL ASSEMBLY	1
2	BRAKE DRUM	2
3	UNIVERSAL JOINT	2
4	AXLE TUBE	1



REDLANDS ASHLYN MOTORS PLC.

COMMENTS: 1. Do not scale drawing 2. If in Doubt Please Ask 3. Debur and Break Sharp edges	Quantity:- UNLESS OTHERWISE SPECIFIED: DIMENSIONS ARE IN MM DUAL VALUES ARE IN INCHES TOLERANCES FRACTIONAL ANGULAR: MACH 1 BEND ± .5° TWO PLACE DECIMAL ± .01 THREE PLACE DECIMAL ± .001	Process - Heat Treatment - Surface Treatment - Finish Final size	Title: REAR AXLE ASSEMBLY Part No. 3RPB151001 SCALE: NTS Project: RAM 28 SIZE :A3 SHEET 1 OF 1
Material: NOT SPECIFIED KGS	Drawn: P.N 12/05/2012 Checked: S.R 12/05/2012 Approved: S.K 12/05/2012		

Part No. 3RPB151001