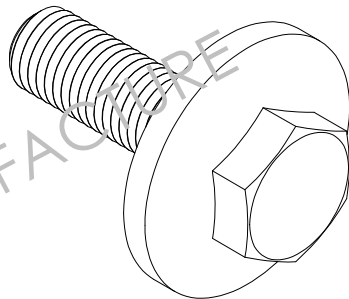
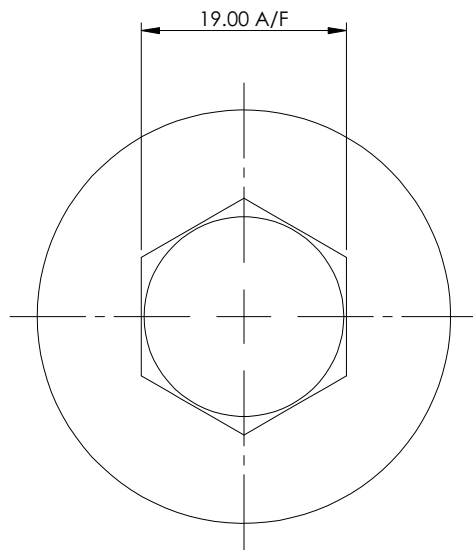
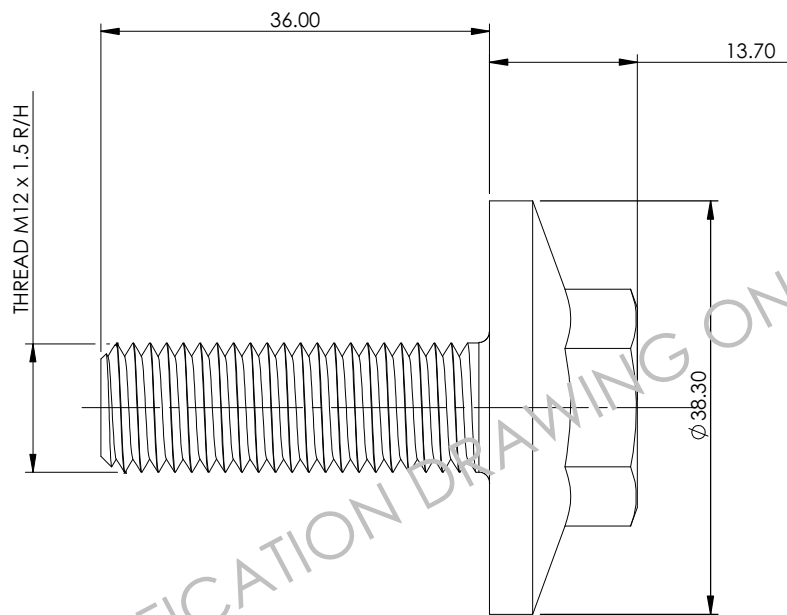

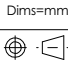


SSF0612



REMOVE ALL BURRS AND SHARP EDGES UNLESS NOTED OTHERWISE
PARTS TO BE SUITABLY PACKAGED TO PREVENT CORROSION AND DAMAGE DURING TRANSIT

| | | | | | | | | | | |
|---|------------------|--|-----------------------|---------|----------|-------------------------------------|-------------------|---|-------|------|
|  <p>BLUE DIAMOND TECHNOLOGIES LTD. Rolvey House, School Close, Chandlers Ford, Eastleigh Hampshire SO53 4BY England Tel: (023) 8025 8966 Fax: (023) 8025 8989 e-mail: bdsales@rolvey.com www.blue-diamond.co.uk</p> <p>THIS DRAWING IS THE PROPERTY OF BLUE DIAMOND TECHNOLOGIES LTD AND MAY NOT BE COPIED OR REPRODUCED IN ANY WAY WITHOUT THE PRIOR WRITTEN PERMISSION OF THIS COMPANY. © BLUE DIAMOND TECHNOLOGIES LIMITED, 2009</p> <p>BECAUSE THE CONDITIONS OF PRODUCT USE VARY WIDELY AND ARE OUTSIDE BLUE DIAMOND TECHNOLOGIES' CONTROL, THE USER MUST EVALUATE AND DETERMINE TO HIS/HER OWN SATISFACTION IF THE PRODUCT IS SUITABLE FOR THE USER'S INTENDED APPLICATION. THIS DESIGN IS OFFERED IN ACCORDANCE WITH OUR TERMS AND CONDITIONS, ISSUE 3 DATED 25/11/2005. A COPY IS AVAILABLE ON REQUEST.</p> | IF IN DOUBT ASK! |  | Dim's=mm | SCALE | NTS | MATERIAL STEEL HARDNESS 32-39 Rc | | FINISH BLACK PHOSPHATE - MUST BE Cr+6 FREE FINISH! | | |
| | | | | DRAWN | MDH | TITLE BOLT | | | | |
| | | | TOLERANCES (U.O.S.):- | DATE | 18-08-10 | DRG. No. BD715 | ISSUE 1 | SHEET 2 | ISSUE | DATE |
| | | | | CHECKED | | | | | | |
| | | | | DATE | | | | | | |
| | | | | WEIGHT | | | | | | |