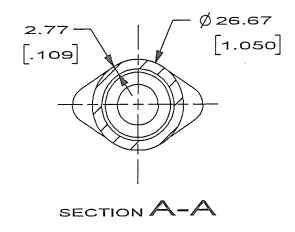
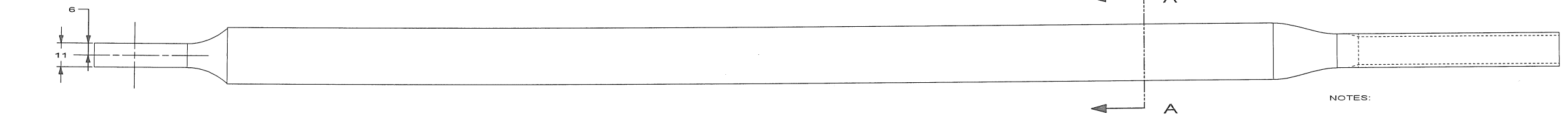
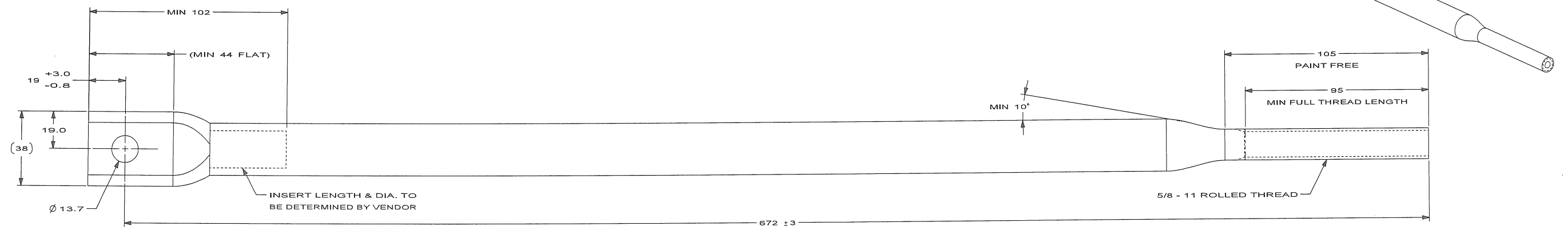


REVISION HISTORY			
SHEET	ZONE	ID	REV
1			001

PRODUCTION STATUS WAS DEVELOPMENT  
THIS PRINT SUPERSEDES ALL ADVANCED PRINTS  
FOR THIS REVISION



- NOTES:
1. REMOVE ALL BURRS AND SHARP EDGES.
  2. PART GEOMETRY NOT DETAILED ON THIS DRAWING MUST CONFORM TO DATA CONTAINED IN CAD FILE A2021129-001.
  3. THREADS TO BE PAINT FREE
  4. DIMENSIONS IN BRACKETS [ ] ARE IN [INCHES]
  5. CAST, STAMP, STENCIL OR LABEL PART NUMBER AND REVISION NUMBER IN SUITABLE LOCATION UNLESS LOCATION SPECIFIED BY AUTOCAR ENGINEERING. PART NUMBER MUST BE LEGIBLE AS RECEIVED.
  6. MATERIAL THICKNESS TOLERANCES MUST CONFORM TO THE SPECIFIED MATERIAL GRADE AND STANDARDS SPECIFIED FOR THE PART AND TAKE PRECEDENCE OVER THE GENERAL TOLERANCES SHOWN ON THE DRAWING.

CRITICAL	NO	
THIS DRAWING, ELECTRONIC FILE AND/OR SPECIFICATIONS ARE THE PROPERTY OF AUTOCAR, LLC. THE DESIGNS AND IDEAS EXPRESSED THEREIN ARE TO BE MAINTAINED IN STRICT CONFIDENCE AND SHALL NOT BE DISCUSSED, DISSEMINATED OR COPIED IN ANY MANNER, EITHER IN WHOLE OR IN PART, WITHOUT THE WRITTEN CONSENT OF AUTOCAR, LLC. THIS DRAWING IS TO BE RETURNED TO AUTOCAR, LLC UPON DEMAND.		
GD&T STANDARD ASME Y14.5M-1994 UNLESS OTHERWISE SPEC'D DIMENSIONS ARE: MM TOLERANCES ARE: X = ±1 X.X = ±0.5 X.XX = ±0.1 X.XXX = ±0.05 X.X' = ±1' X.XX' = ±0.5'	MATERIAL ASTM_A500_GB	TREATMENT FINISH PER AES00005
THIRD ANGLE PROJECTION	DRAWN BY JANSE VAN RENSBURG	DATE 2011MAR22
	CAD SYSTEM NX 6.0.5	SCALE 1:1
DOCUMENT NAME <b>RADIATOR STAY</b>		DOCUMENT SIZE A1
DOCUMENT NUMBER A2021129		SHEET 1 OF 1

A2021129-001	RADIATOR STAY	7850.000	1.356	JANSE VAN RENSBURG	001
PART NUMBER	PART NAME	MODEL DENSITY (Kg/m <sup>3</sup> )	MODEL NET WEIGHT (Kg)	REV BY	REV
MODULE	202 - RADIATOR TIE RODS				

DO NOT SCALE DRAWING

EAO = 600

TEAMCENTER LIFE CYCLE INFORMATION