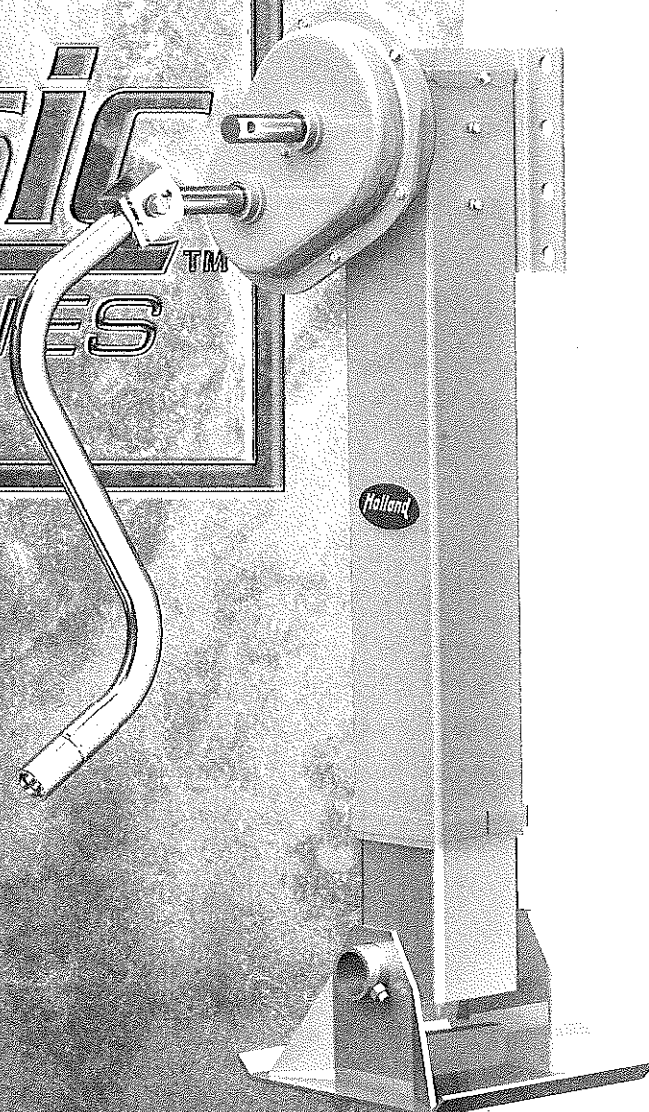




SAF-HOLLAND Group

# HOLLAND CLASSIC™ LANDING GEAR



THE LEADER IN PROVEN  
DEPENDABILITY AND REAL  
WORLD VALUE

SAF-Holland

## SETTING THE STANDARD FOR DEPENDABILITY AND VALUE

The Holland Classic™ Landing Gear merges proven engineering technology with quality and durability to create a new standard in landing gear performance. From the smooth shifting and reliability of the patented Constant Mesh gearbox design, to the durability and toughness of the exclusive FloatingNut™ with Twin-Bulkhead construction; the Classic™ offers a landing gear that was built to carry on the Holland name and tradition of trouble-free performance and exceptional value for years to come.

## RELIABLE PERFORMANCE. EASY OPERATION

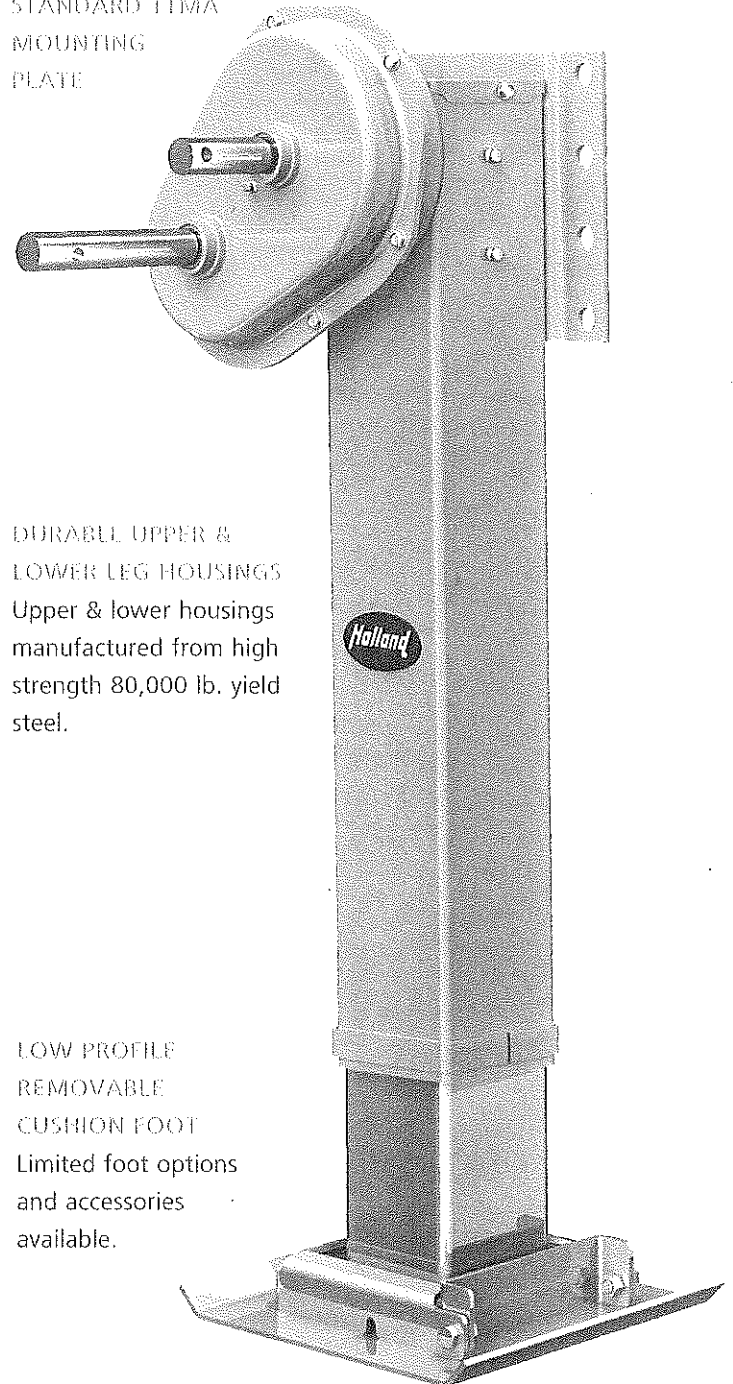
- Constant Mesh Gearbox Design Provides Trouble Free Shifting
- Meets All AAR M-931 and All TTMA RP-4 Performance Specifications
- High-Strength Ductile Iron Gears
- 5-Year Material and Defects Warranty  
(See warranty for details)
- Reduced Weight with Increased Structural Integrity



SAF-HOLLAND Group

## CLASSIC™ SE

INDUSTRY  
STANDARD TTMA  
MOUNTING  
PLATE



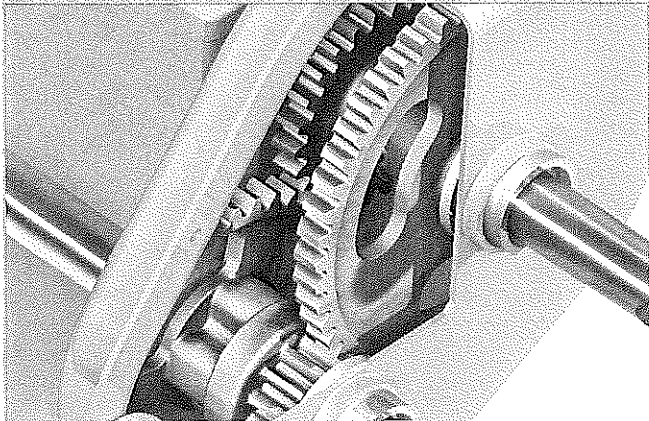
DURABLE UPPER &  
LOWER LEG HOUSINGS  
Upper & lower housings  
manufactured from high  
strength 80,000 lb. yield  
steel.

LOW PROFILE  
REMOVABLE  
CUSHION FOOT  
Limited foot options  
and accessories  
available.

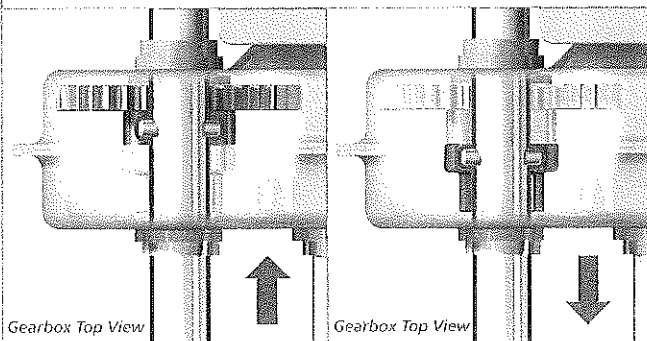


# IES LANDING GEAR

## PATENTED\* CONSTANT MESH GEARBOX DESIGN



Eliminates high-to-low shifting problems common to traditional landing gear. Using a crankshaft with a roll pin, only the crankshaft moves to engage the drive gears. No in-or-out movement of drive gears is required - keeping the gears constantly meshed. This design not only provides smooth shifting under loaded conditions, but also prevents slip cranking and difficult high-to-low shifting in cold weather.

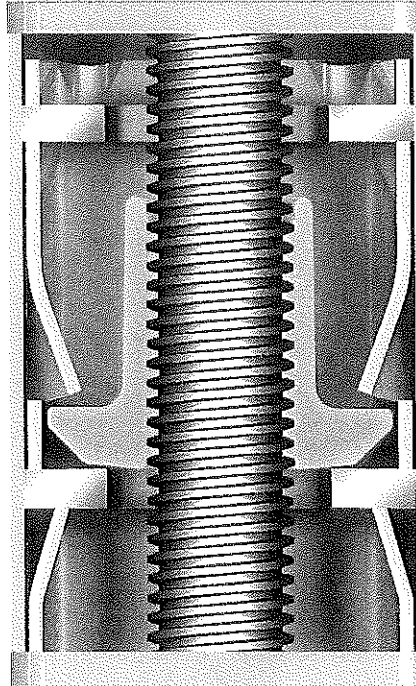


Gearbox Top View  
CRANKSHAFT ENGAGED  
IN HIGH DRIVE GEAR

Gearbox Top View  
CRANKSHAFT ENGAGED  
IN LOW DRIVE GEAR

Patent Numbers. 4,923,175 & 6,099,016

## PATENTED\* FLOATINGNUT™ WITH TWIN-BULKHEAD



The FloatingNut™ protects the elevating screw and threads from excessive side loading caused by dock-walk - damage which can cause poor cranking performance or binding. Unique Twin-Bulkheads, above and below the FloatingNut™, further increase structural resistance to side-load forces when landing gear legs are fully extended.

## SPECIFICATIONS

### CAPACITIES

140,000 lbs Load Capacity  
27,000 lbs. Side Load Capacity  
39,000 lbs. Lift Capacity  
(100 ft./lbs. Input Torque)

### WEIGHT

158 lbs. Cushion Foot Model  
(17" Travel Conventional RCF)  
170 lbs. Sandshoe Model  
(17" Travel Universal Mount  
10x10x4-112 Sandshoe)

NOTE: Weight Measurements  
are less hardware

### GEARING

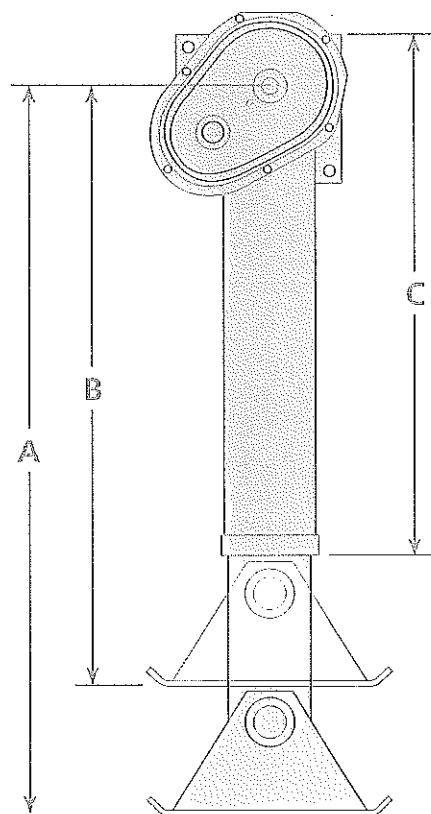
3.2 Turns Per Inch - High Gear  
19.3 Turns per Inch - Low Gear

All tests in accordance with AAR and  
TTMA recommended practice

# ORDERING INFORMATION

EXAMPLE: LG2 T 0 1 - 7 0 0 0 - XX XXX

SAF-HOLLAND															
MODEL		DRUMS		SHAFTS		GEARS		GEAR RATIO		GEAR TYPE		GEAR MATERIAL		GEAR FINISH	
LG2	T	TWO SHAFT CONSTANT MESH	0	UNIVERSAL	1	SANDSHOE - STD. 4-1/2" X 10" X 10"	7	17"	0	SETS	0	STANDARD	0	STANDARD PACK	CONTACT SAF-HOLLAND FOR SPECIAL OPTIONS AND ACCESSORIES
			1	REVERSE	2	SANDSHOE - STD. 4-1/2" X 10" X 12"	9	19"	1	LH					
			2	I-BEAM 6.5" DIA.	3	SANDSHOE - STD. 2" X 10" X 10"			2	RH					
			9	CONVENTIONAL	4	SANDSHOE - STD. 2" X 10" X 12"									
					Z	LOW PROFILE RCF 10" X 10"									

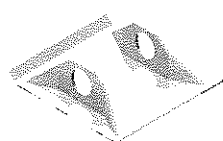


## DIMENSIONS

	EXTENDED DIMENSION (IN)	RETRACTED DIMENSION (IN)	UPPER TRAC (IN)
LOW PROFILE CUSHION FOOT			
17" Travel (16.87")	46.00	29.00	30.06
19" Travel (19.12")	48.75	29.75	30.06
4.5" SANDSHOE			
17" Travel (16.87")	48.19	31.19	28.06
19" Travel (19.12")	52.69	33.69	30.06
2" SANDSHOE			
17" Travel (16.87")	45.69	28.69	28.06
19" Travel (19.12")	50.19	31.19	30.06

## LANDING GEAR ACCESSORIES & FOOTWEAR OPTIONS

SAF-HOLLAND has a variety of options for the landing gear system. The options are listed below and are available for the landing gear system.



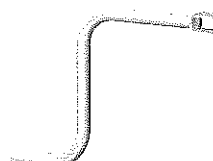
STANDARD SAND  
SHOE



HEAVY DUTY SAND  
SHOE



SHAFTS AND BRACES



CRANK HANDLES



CRANK HANGERS