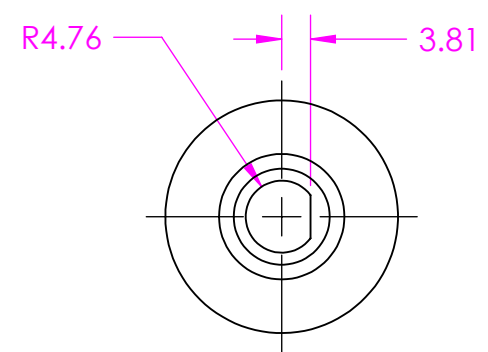
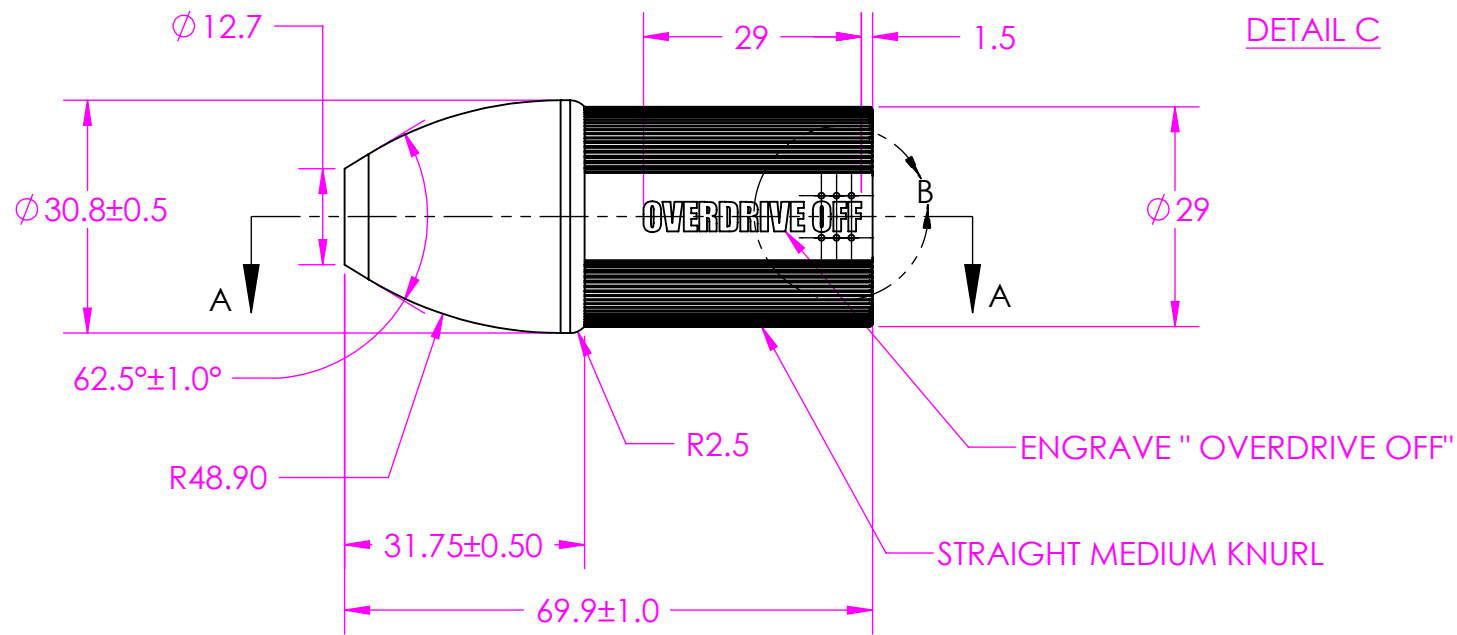
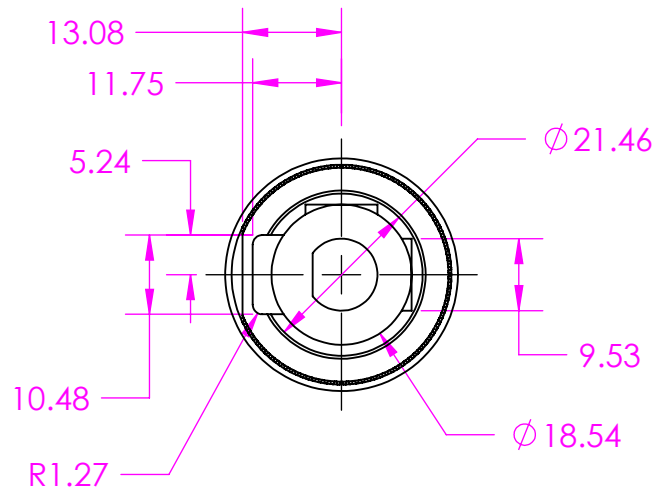
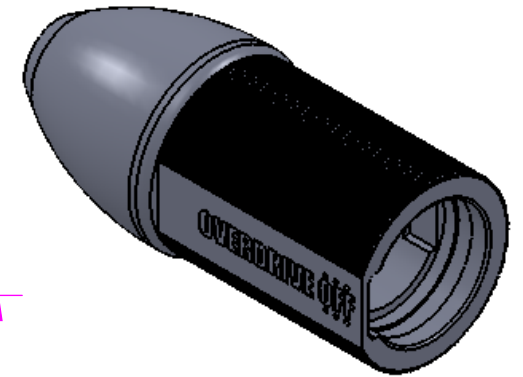
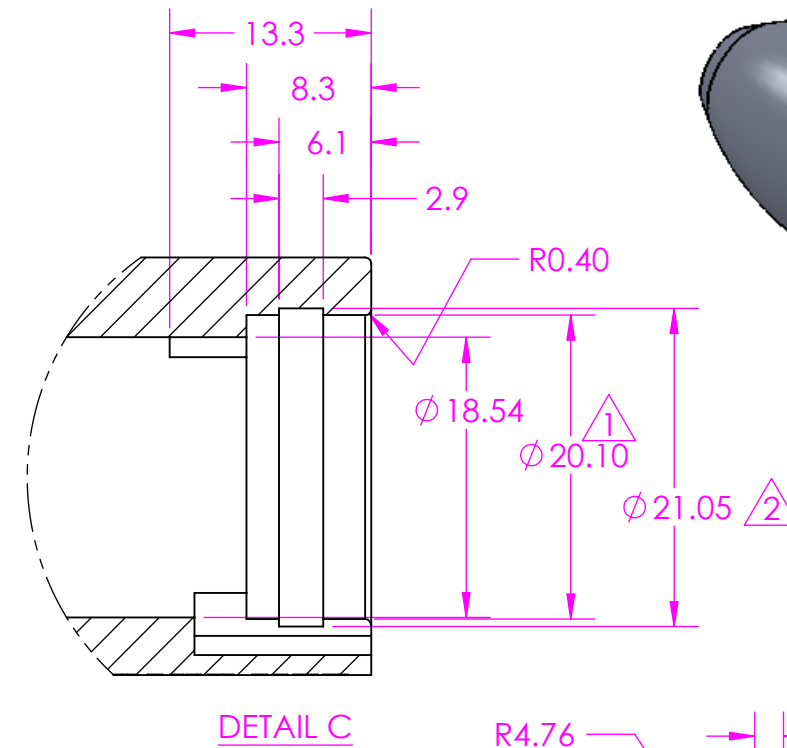
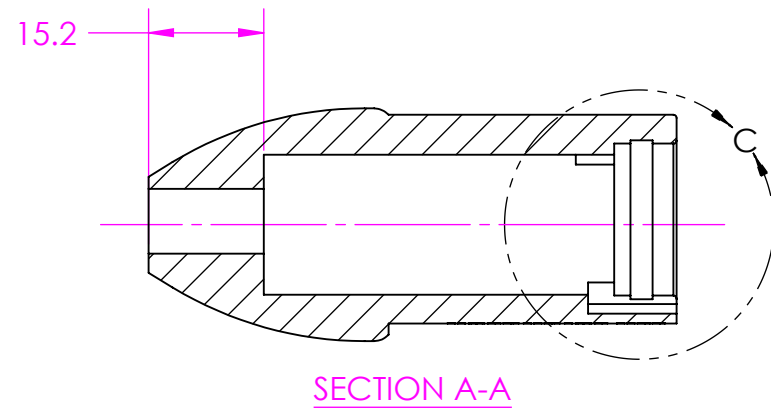
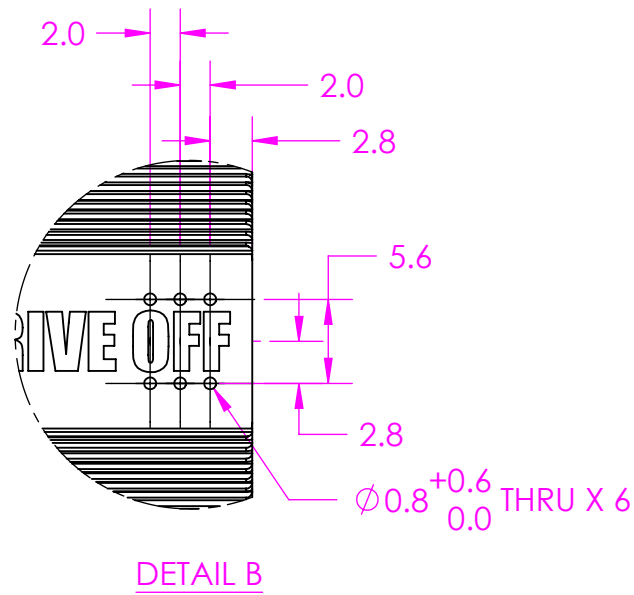


REVISIONS			
REV.	DESCRIPTION	DATE	APPROVED
A	INITIAL RELEASE	01/24/2012	SRI



NOTES:

1. PART MUST BE FREE OF ALL BURRS, CHIPS AND SHARP EDGES.

- USE THIS SYMBOL (DIAMOND) TO IDENTIFY ANY CHARACTERISTIC RELEVANT TO FIT AND FUNCTION

- USE THIS SYMBOL (SHIELD) TO IDENTIFY ANY CHARACTERISTIC RELEVANT TO SAFETY OR COMPLIANCE TO SAFETY REGULATIONS

ZINC PLATED COMPONENTS TO BE PLATED PER ASTM B633-07, SERVICE CONDITION SC2, TYPE II, CHROMATE USING TRIVALENT CHROMIUM. (HEXAVALENT CHROMIUM NOT PERMITTED)

DORMAN AGREEMENT
APPROVED PRINT CONSTITUTES DORMAN AGREEMENT TO EXTERNAL ENVELOPE DIMENSIONS, MATERIAL, SPECIFICATIONS AND INTERFACE DIMENSIONS TO MATING PARTS. VENDOR IS RESPONSIBLE FOR FUNCTIONALITY AND PERFORMANCE OF THE PRODUCT, WHICH IS NOT INCLUDED IN THIS APPROVAL AGREEMENT.

PROPRIETARY AND CONFIDENTIAL
THE INFORMATION CONTAINED IN THIS DRAWING IS THE SOLE PROPERTY OF DORMAN PRODUCTS. ANY REPRODUCTION IN PART OR AS A WHOLE WITHOUT THE WRITTEN PERMISSION OF DORMAN PRODUCTS IS PROHIBITED.

STATE:

UNLESS OTHERWISE SPECIFIED DIMENSIONS ARE IN MILLIMETERS

TOLERANCES:
Metric
No decimals: +/- 0.5
1 place decimal: +/- 0.2
2 place decimal: +/- 0.1

Inch
Fractional: +/- 1/64 (.0156in)
2 place decimal: +/- .010
3 place decimal: +/- .005

Angular: +/- 1/2° V21711

INTERPRET GEOMETRIC TOLERANCING PER: ASME Y14.5M 1994

MATERIAL
AA 6061 ALUMINUM

FINISH
ANODIZE TYPE II, BLACK COLOR

NAME	DATE
DRAWN MAT	01/24/2012
CHECKED	

PROJECTION: **FIRST ANGLE**

DORMAN PRODUCTS
3400 E. Walnut St, Colmar, PA, 18915
Phone: (215)-997-1800 www.DormanProducts.com

TITLE:
SHIFT KNOB

DWG. NO. **905-109-02**

REV **A**

DO NOT SCALE DRAWING SHEET 1 OF 1