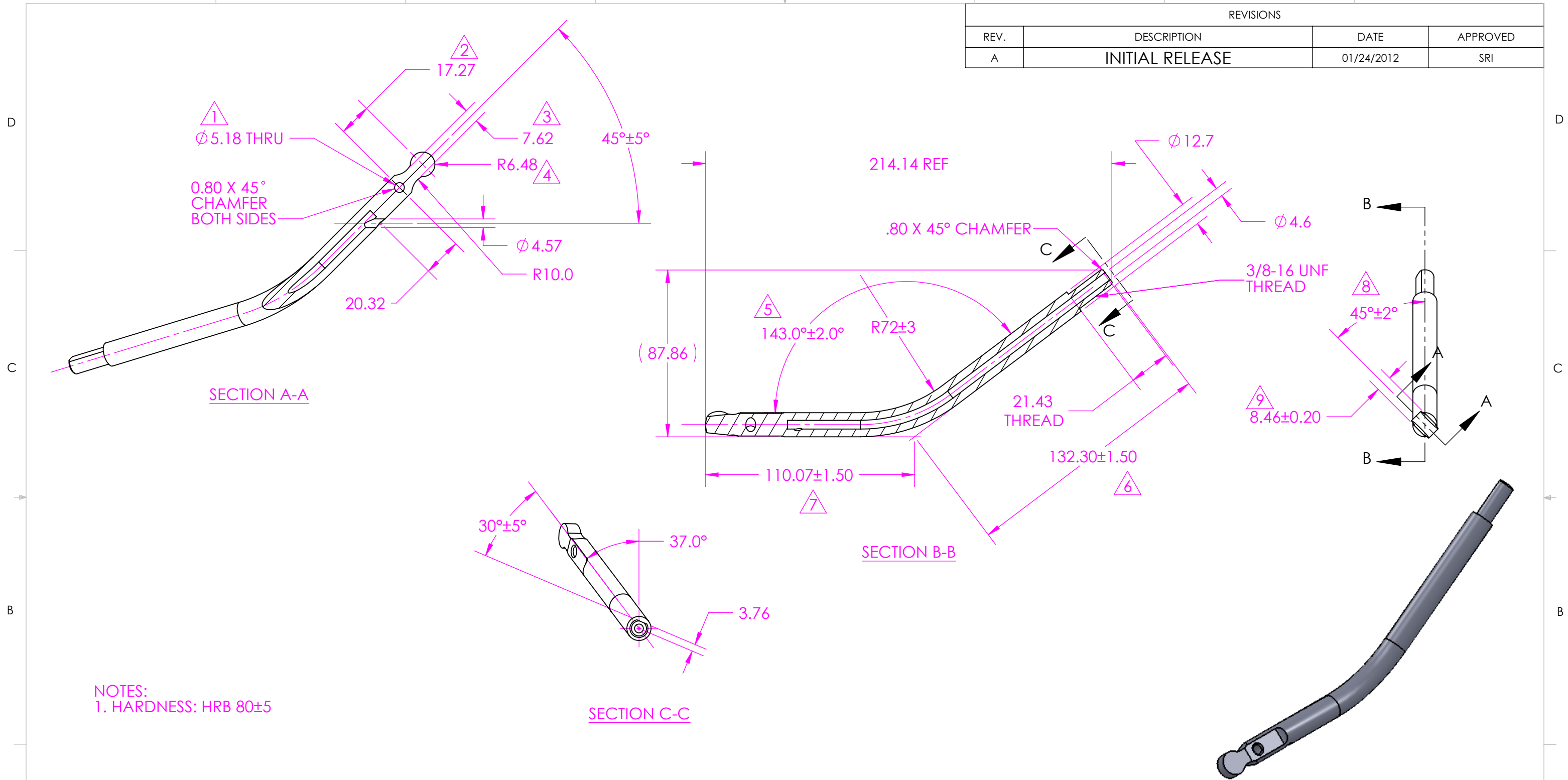


REVISIONS			
REV.	DESCRIPTION	DATE	APPROVED
A	INITIAL RELEASE	01/24/2012	SRI



NOTES:  
1. HARDNESS: HRB 80±5

- USE THIS SYMBOL (DIAMOND) TO IDENTIFY ANY CHARACTERISTIC RELEVANT TO FIT AND FUNCTION  
- USE THIS SYMBOL (SHIELD) TO IDENTIFY ANY CHARACTERISTIC RELEVANT TO SAFETY OR COMPLIANCE TO SAFETY REGULATIONS

ZINC PLATED COMPONENTS TO BE PLATED PER ASTM B633-07, SERVICE CONDITION SC2, TYPE II, CHROMATE USING TRIVALENT CHROMIUM. (HEXAVALENT CHROMIUM NOT PERMITTED)

**DORMAN AGREEMENT**  
APPROVED PRINT CONSTITUTES DORMAN AGREEMENT TO EXTERNAL ENVELOPE DIMENSIONS, MATERIAL, SPECIFICATIONS AND INTERFACE DIMENSIONS TO MATING PARTS. VENDOR IS RESPONSIBLE FOR FUNCTIONALITY AND PERFORMANCE OF THE PRODUCT, WHICH IS NOT INCLUDED IN THIS APPROVAL AGREEMENT.

**PROPRIETARY AND CONFIDENTIAL**  
THE INFORMATION CONTAINED IN THIS DRAWING IS THE SOLE PROPERTY OF DORMAN PRODUCTS. ANY REPRODUCTION IN PART OR AS A WHOLE WITHOUT THE WRITTEN PERMISSION OF DORMAN PRODUCTS IS PROHIBITED.

STATE:

UNLESS OTHERWISE SPECIFIED DIMENSIONS ARE IN MILLIMETERS

TOLERANCES:  
*Metric*  
No decimals: +/- 0.5  
1 place decimal: +/- 0.2  
2 place decimal: +/- 0.1

*Inch*  
Fractional: +/- 1/64 (.0156in)  
2 place decimal: +/- .010  
3 place decimal: +/- .005

Angular: +/- 1/2° V21711

INTERPRET GEOMETRIC TOLERANCING PER: ASME Y14.5M 1994

MATERIAL

**SAE 1010 TO 1025 STEEL**

FINISH

**BLACK POWDER COAT**

NAME	DATE
DRAWN <b>MT</b>	2/8/12
CHECKED	
PROJECTION: <b>FIRST ANGLE</b>	
MATERIAL	
<b>SAE 1010 TO 1025 STEEL</b>	
FINISH	
<b>BLACK POWDER COAT</b>	

**DORMAN PRODUCTS**  
3400 E. Walnut St, Colmar, PA, 18915  
Phone: (215)-997-1800 www.DormanProducts.com

TITLE:  
**SHIFT LEVER**

DWG. NO.  
**905-109-01**

DO NOT SCALE DRAWING SHEET 1 OF 1

REV  
**A**