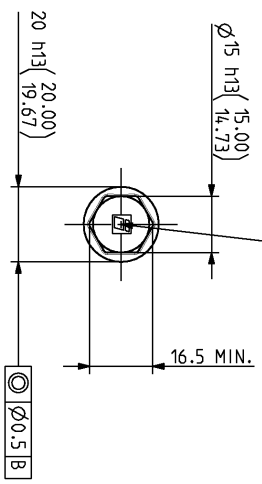
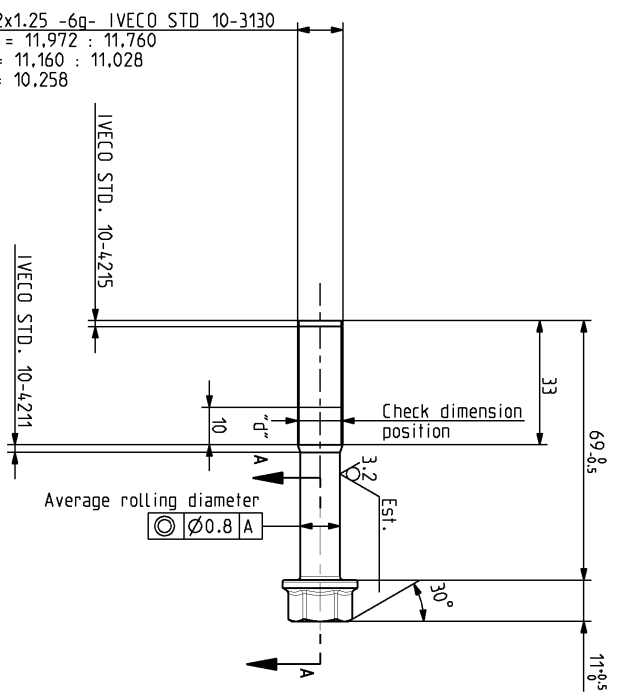
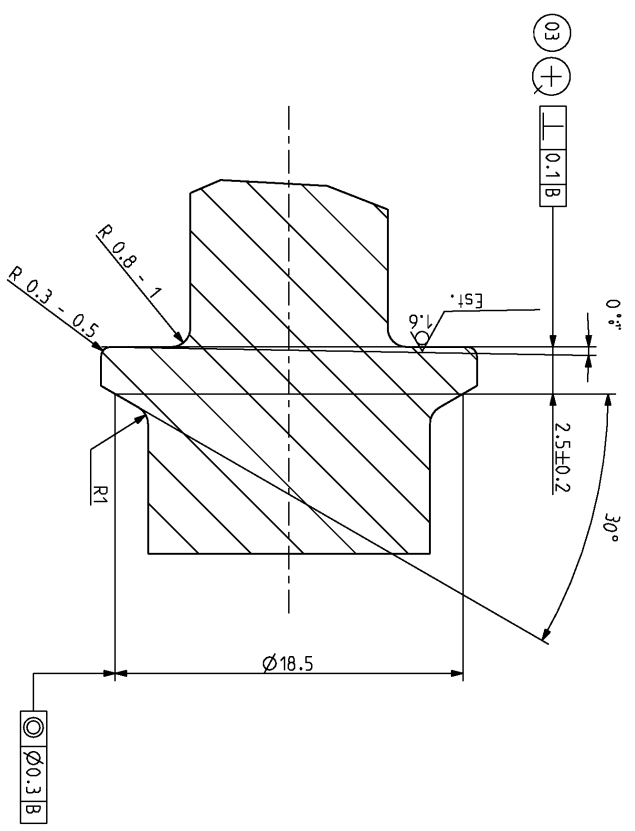


PARTICOLARA DA MARCHIARE SECONDO NORMA IVECO  
 MARCHIO 2-5 IVECO STD.10.0804  
 POSIZIONE DELLA MARCATURA DA DEFINIRE A CURA DEL  
 FORNITORE O DEL SERVIZIO METODI DELLO STABILIMENTO  
 COSTRUTTORE  
 ITEM TO BE MARKED ACCORDING TO IVECO NORM  
 MARK 2-5 IVECO STD.10.0804  
 LOCATION OF MARK HAS TO BE DEFINED BY THE SUPPLIER OR  
 BY THE METHODS DEPARTMENT OF MANUFACTURING PLANT

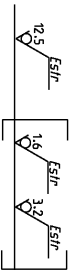


PROCEDURE FOR SUPERFICIAL TREATMENT OF LUBRICATION	
1	ULTRASONIC CLEANING
2	PHOSPHATING (SEE I.S. **)
3	DOW CORNING MOLYKOTE D 348L TREATMENT (TO AVOID DROPS ON THE THREADS)
4	OVEN POLYMERIZATION (SEE TECHNICAL SPECIFICATION PRODUCT)
5	THICKNESS OF MOLYKOTE TREATMENT 10 - 15 μ

NOTE:  
 - COLD-ROLLED THREAD AND COLD-FORMED HEAD.  
 - SCREW MUST BE FREE FROM CRACKS.  
 - CHECK SCREW AFTER DISASSEMBLY, DON'T REASSEMBLE IF "d", MEASURED AS SHOWN, IS LESS THEN 11.4 mm.



CAD DRAWING  
 HANDLING ON CAD SYSTEM ONLY



STANDARD SYMBOLS		SYMBOLS	
1:1	1:1	10R	10R
1:10	1:10	F.FAR26**	F.FAR26**
1:100	1:100	0.000	0.000
1:1000	1:1000	18-106	18-106
1:10000	1:10000	207	207
1:100000	1:100000	207/670	207/670
1:1000000	1:1000000	504126229 E D 54-0815	504126229 E D 54-0815
1:10000000	1:10000000	1/1	1/1