

Table with columns: PERFIL REAL DO CAME, TRU CAM PROFILE, and numerical data for various cam profiles.

Table with columns: PERFIL REAL DO CAME, TRU CAM PROFILE, and numerical data for various cam profiles.

Table with columns: PERFIL REAL DO CAME, TRU CAM PROFILE, and numerical data for various cam profiles.

Table with columns: PERFIL REAL DO CAME, TRU CAM PROFILE, and numerical data for various cam profiles.

Table with columns: PERFIL REAL DO CAME, TRU CAM PROFILE, and numerical data for various cam profiles.

Table with columns: PERFIL REAL DO CAME, TRU CAM PROFILE, and numerical data for various cam profiles.

Table with columns: PERFIL REAL DO CAME, TRU CAM PROFILE, and numerical data for various cam profiles.

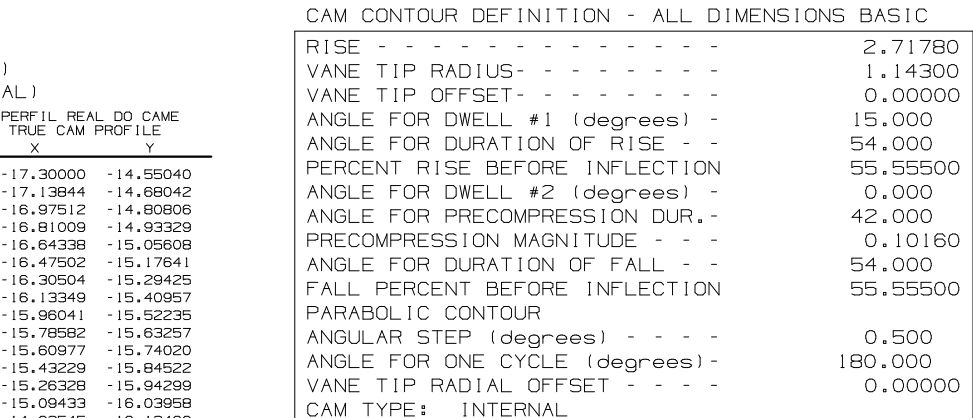


Table with columns: CAM TYPE, INTERNAL, and numerical data for cam types.

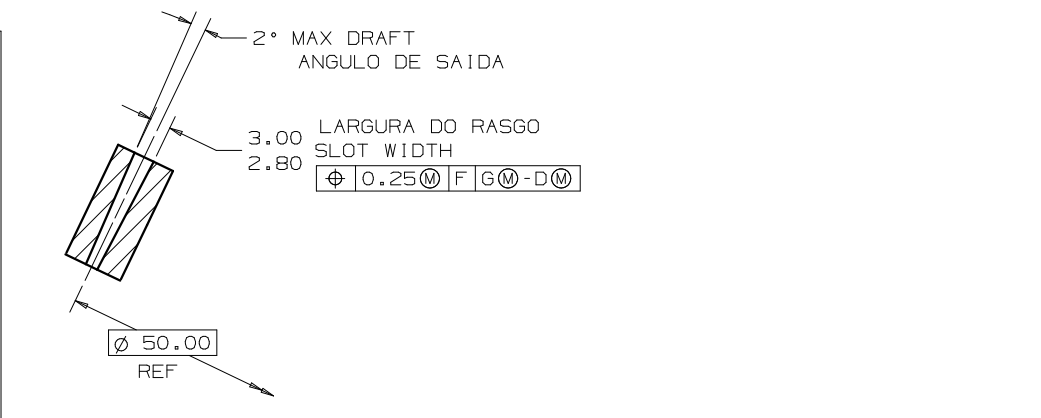
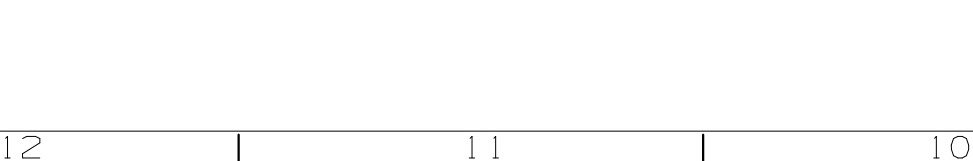
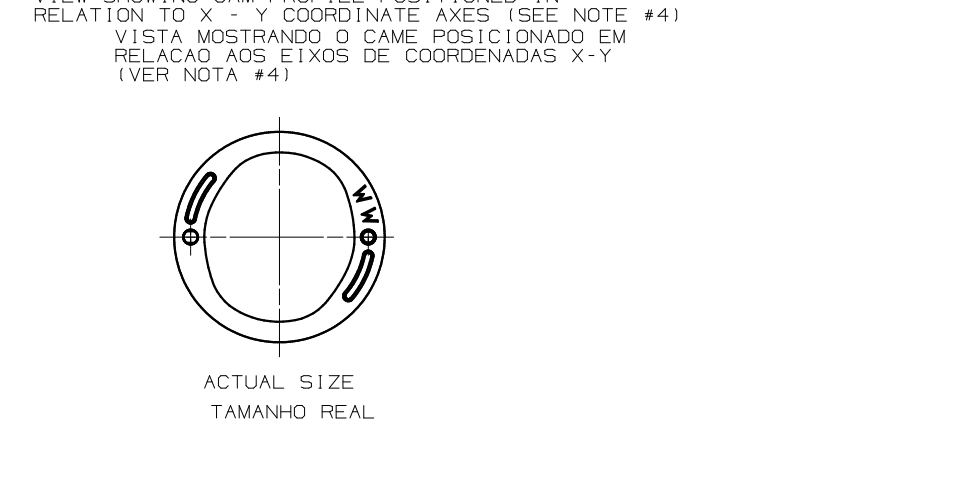
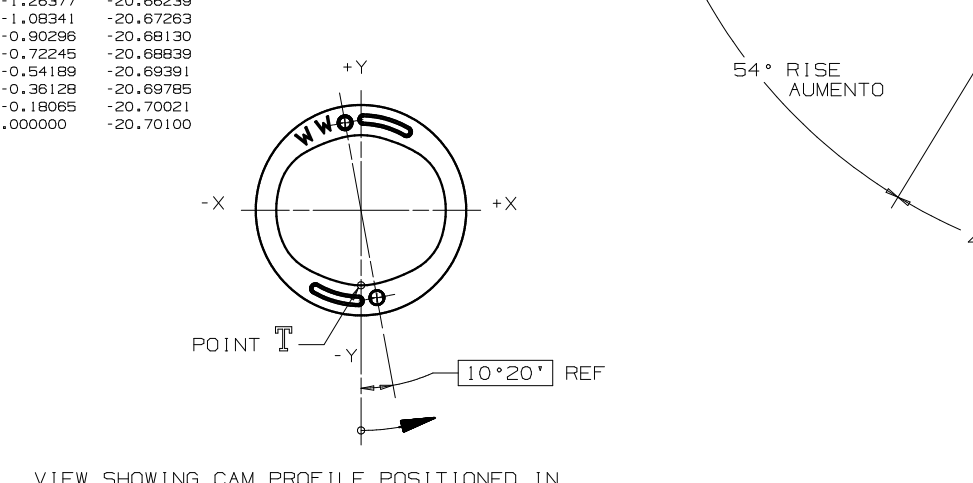
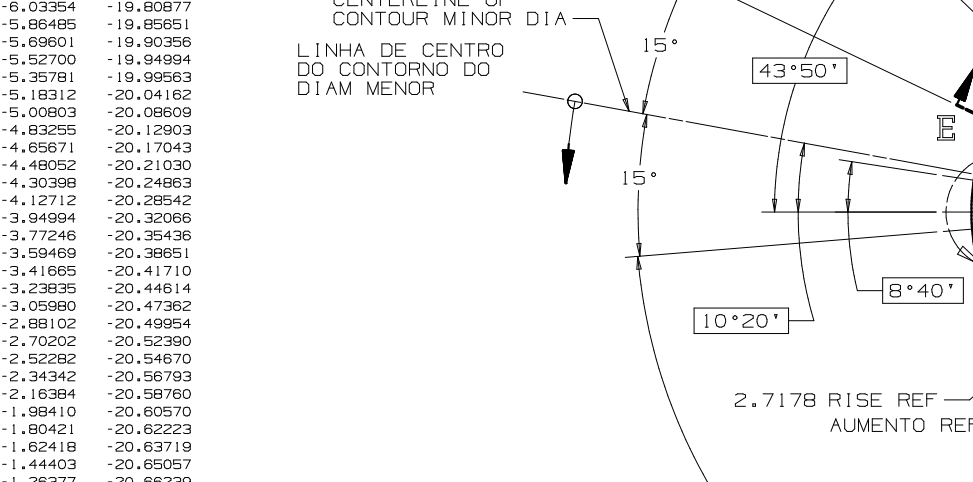
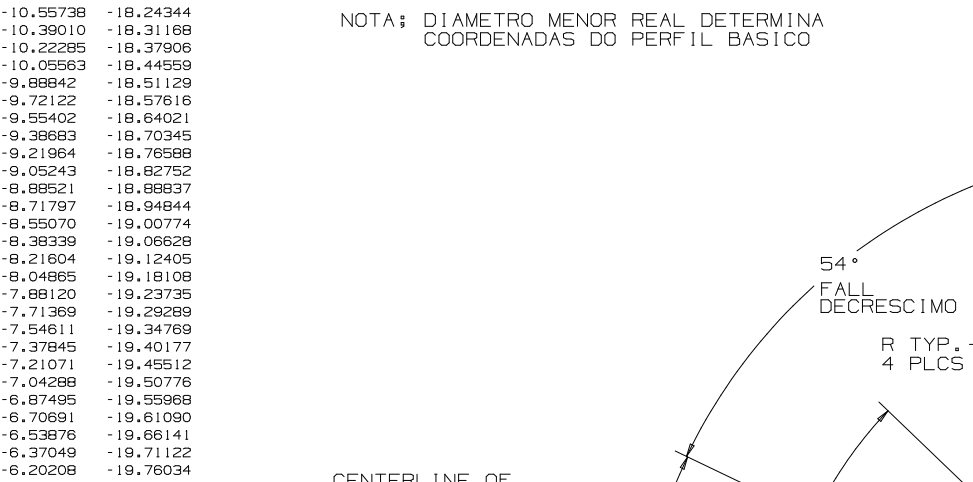


Table with columns: CAM TYPE, INTERNAL, and numerical data for cam types.

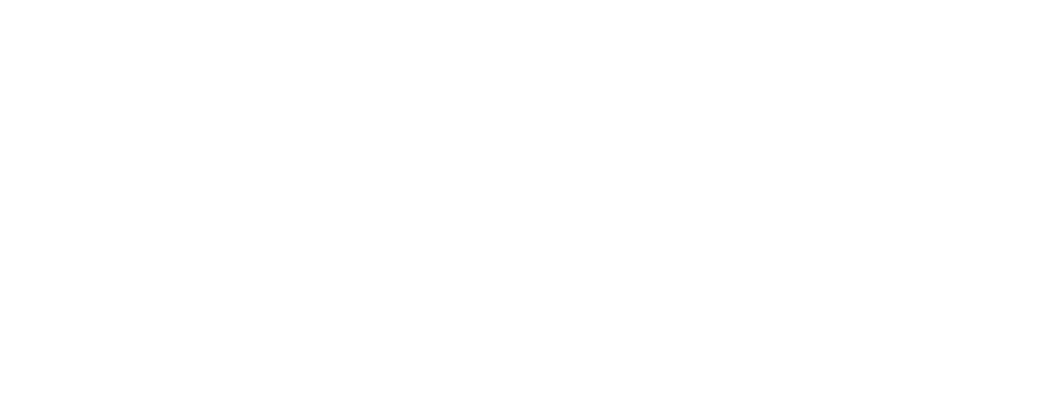
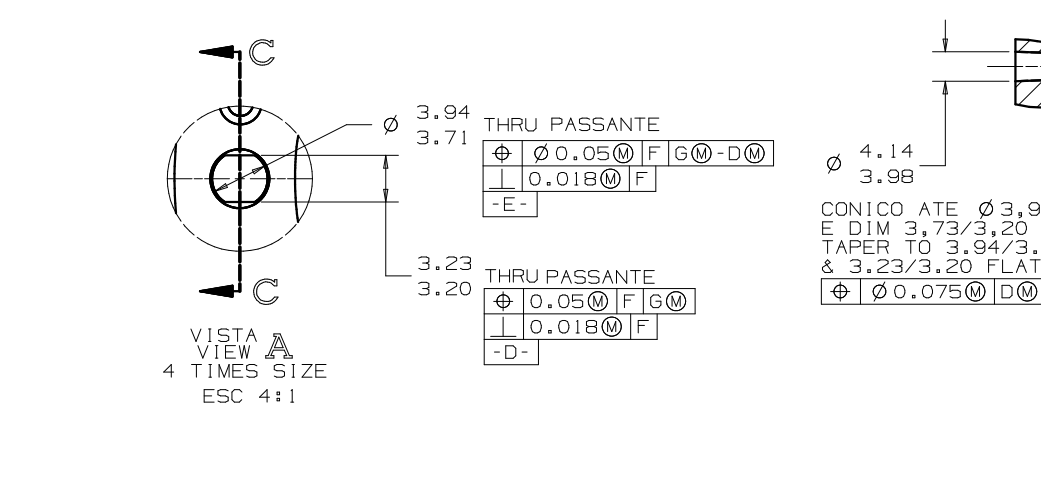
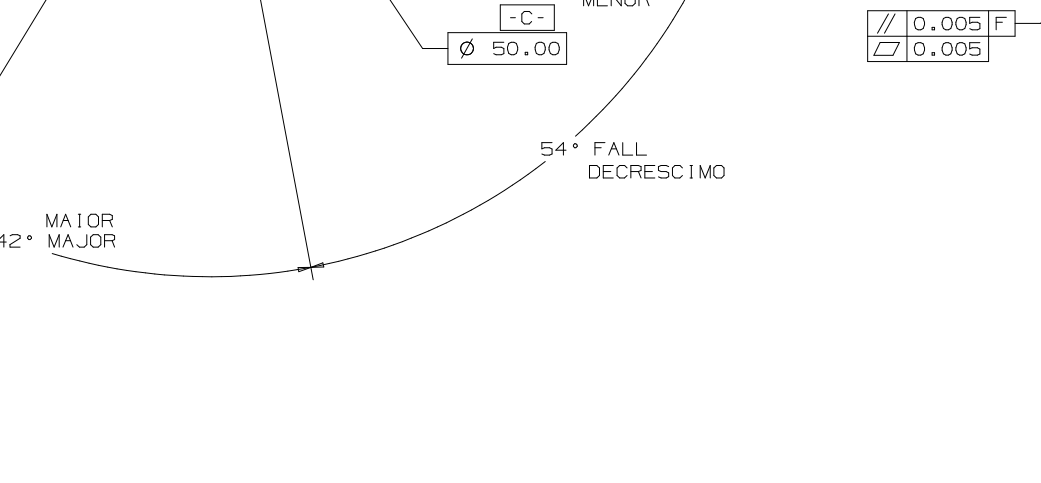
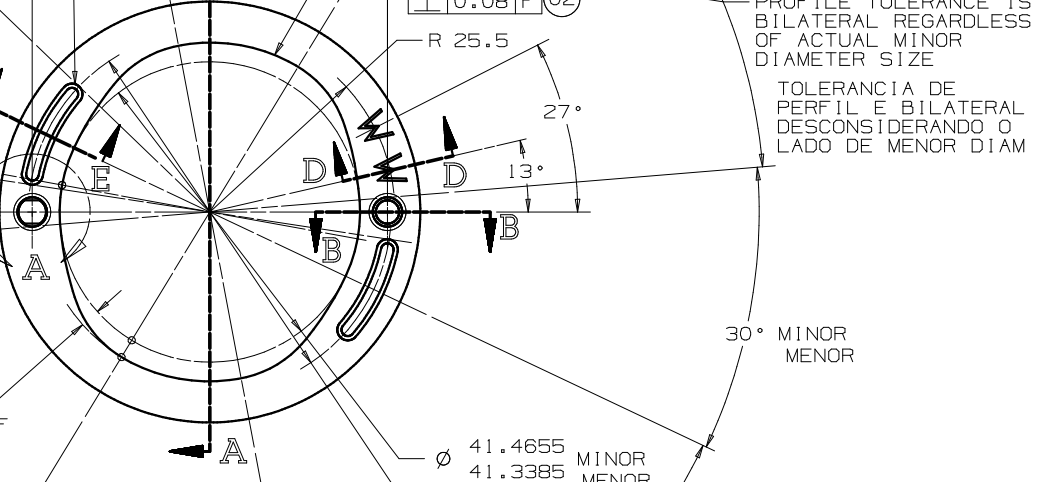
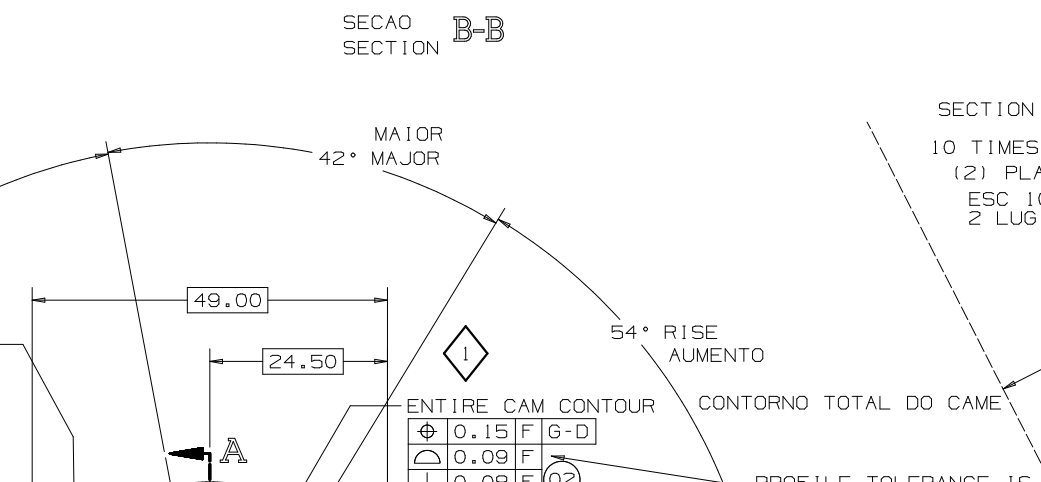
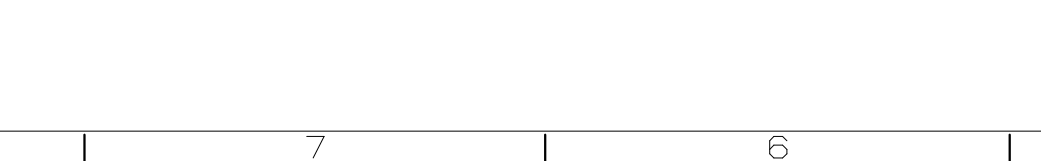
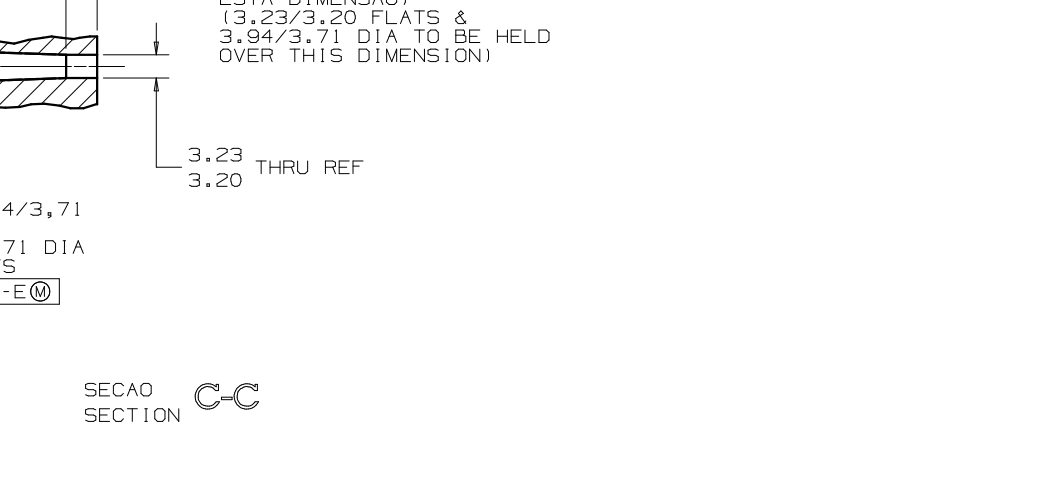
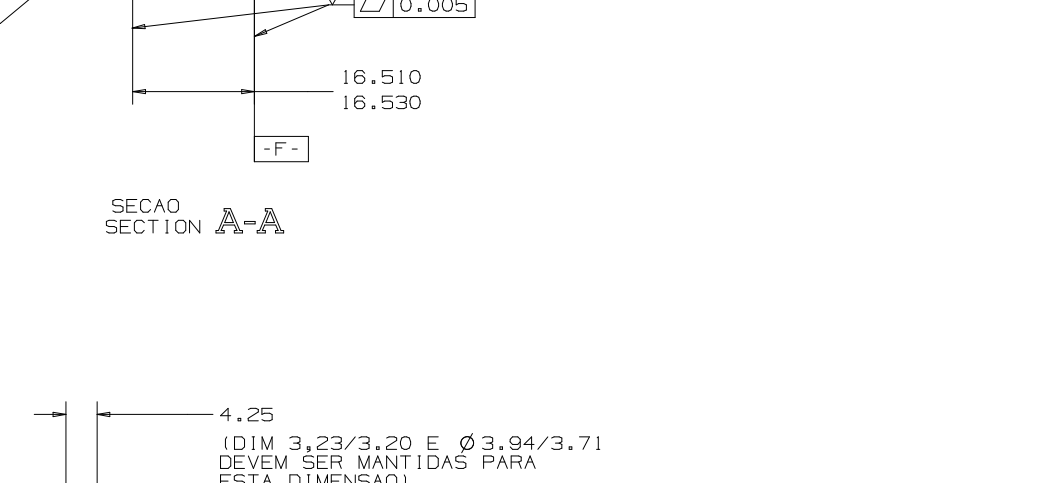
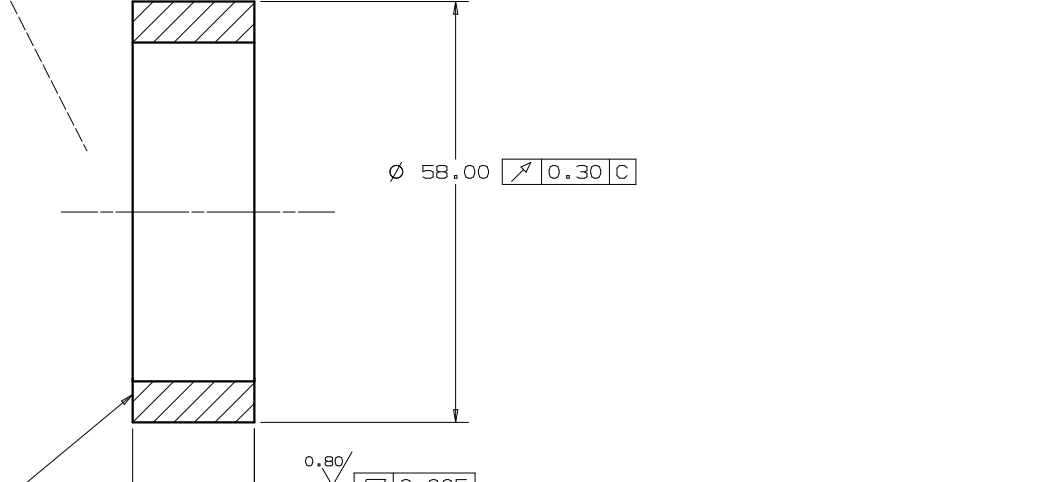
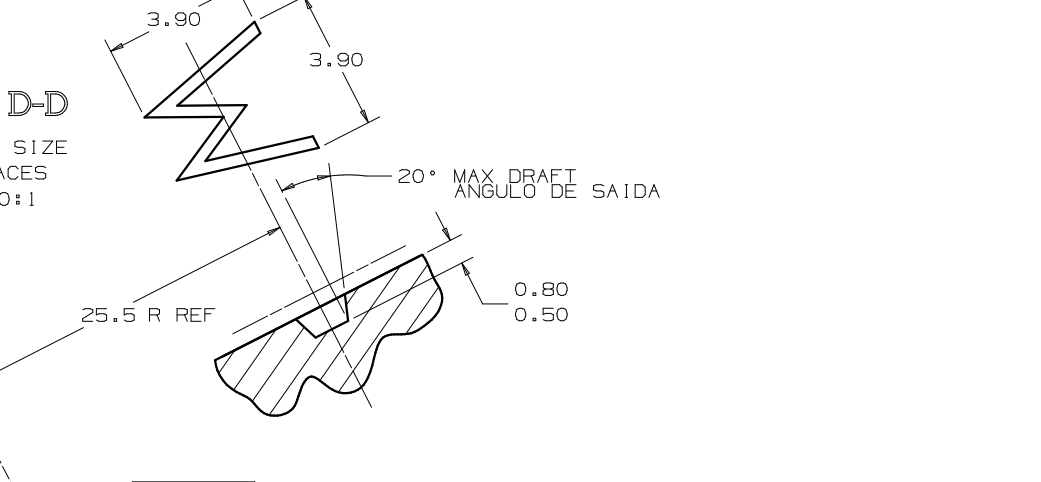
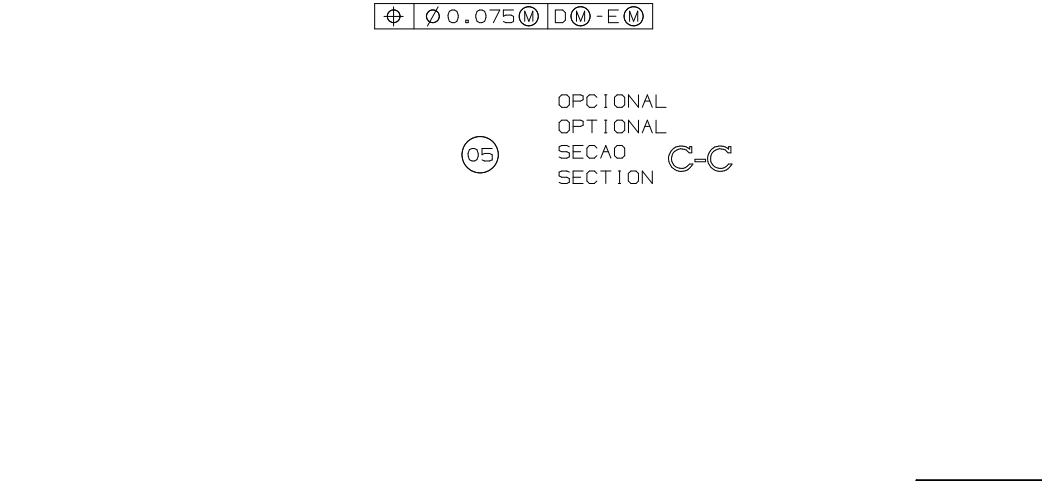
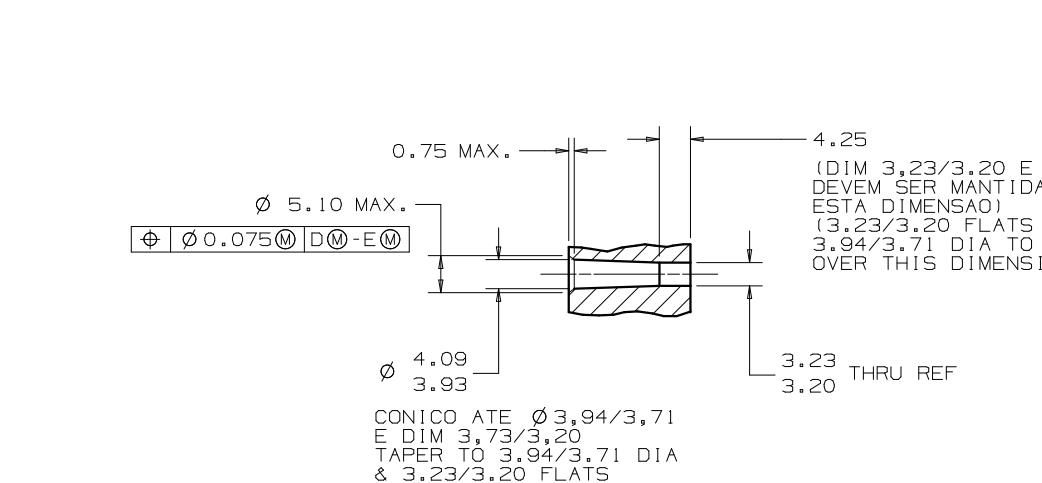
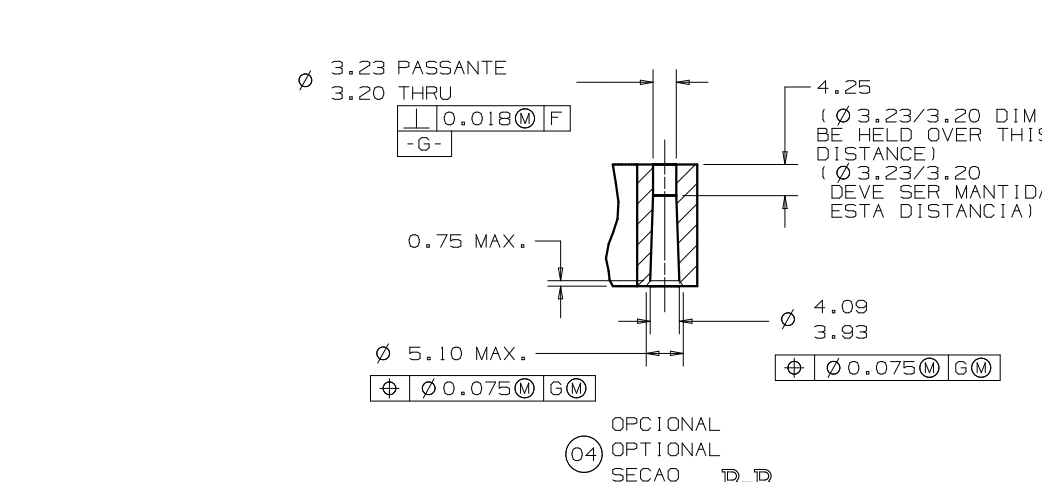
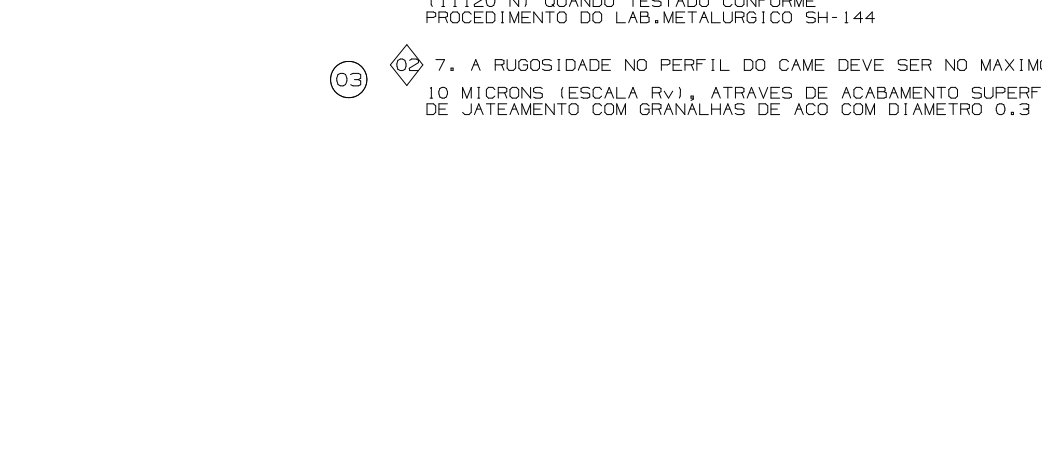


Table with columns: CAM TYPE, INTERNAL, and numerical data for cam types.



- 1. MATERIAL: AÇO SINTERIZADO CONFORME... 2. TRATAMENTO TERMICO... 3. DENSIDADE: 6,9 g/cc... 4. DIMENSÕES COORDENADAS X-Y DO PERFIL DO CAME... 5. NAO SAO PERMITIDAS REBARBAS DE MOLDAGEM NOS... 6. TENSÃO DE RUPTURA: RUPTURA RADIAL APOS TRATAMENTO TERMICO... 7. A ROUGOSIDADE NO PERFIL DO CAME DEVE SER NO MAXIMO DE 10 MICRONS...



- 1. MATERIAL: SINTERED STEEL MP/IF - FLC 460B... 2. HEAT TREAT: SINTER FURNACE HARDEN... 3. DENSITY: 6,9 g/cc... 4. CAM PROFILE X-Y COORDINATE DIMENSIONS... 5. NO MOLDING FLASH ALLOWED ON DOWEL PIN HOLES... 6. CRUSH STRENGTH: AS HEAT TREATED RADIAL... 7. THE ROUGHNESS IN THE PROFILE OF THE CAM MUST BE IN THE MAXIMUM OF 10 MICRONS...

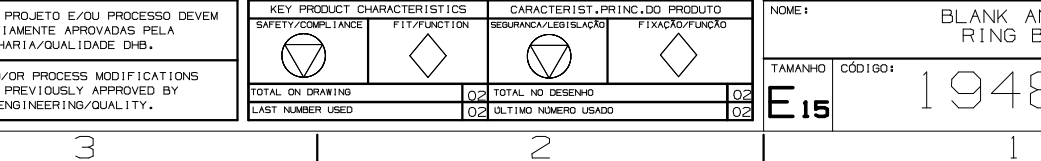
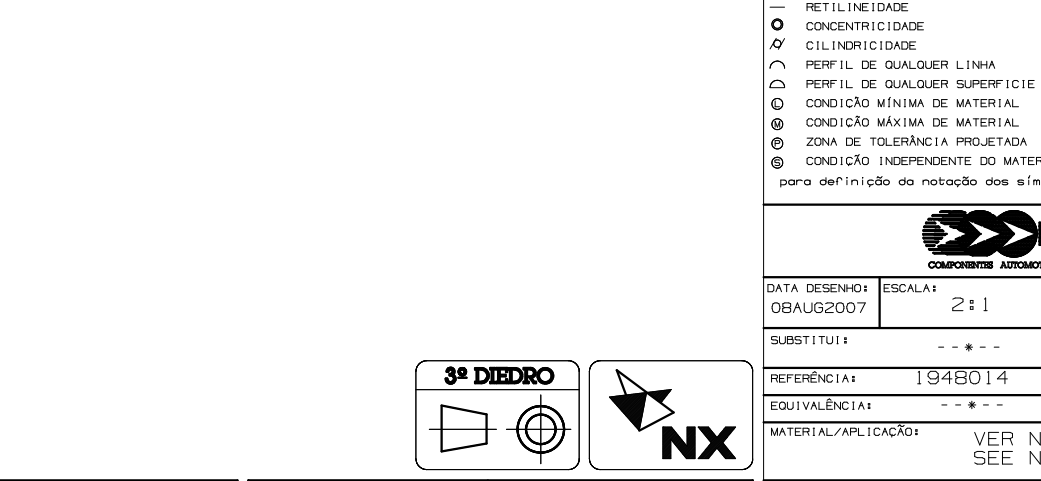
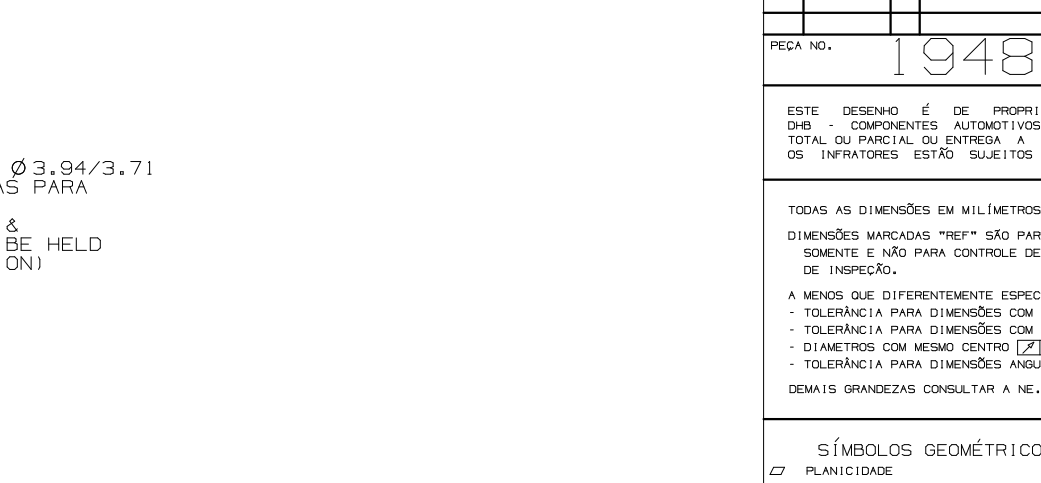
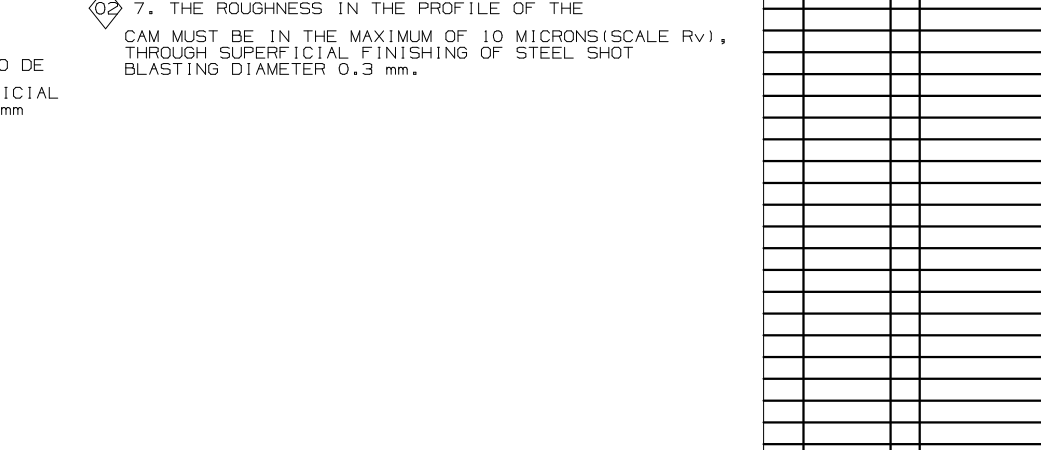


Table with columns: DATA, N, ALTERAÇÃO, A.D., DE, RV, and numerical data for design changes.

Table with columns: DATA, N, ALTERAÇÃO, A.D., DE, RV, and numerical data for design changes.