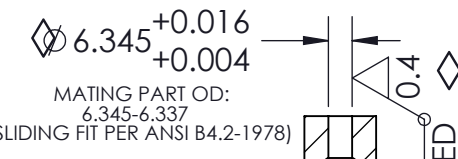
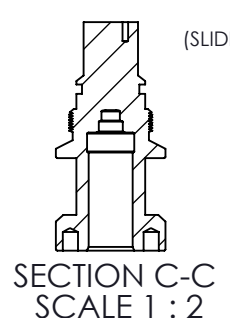


0.8 ALL OTHER MACHINED SURFACES

SECTION D-D SCALE 1:2

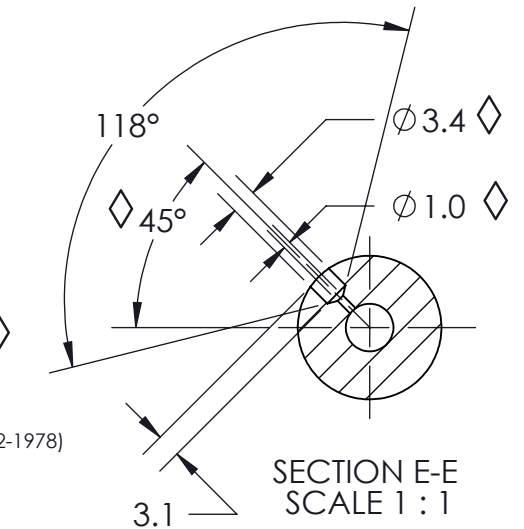


MATING PART OD: 6.345-6.337 (SLIDING FIT PER ANSI B4.2-1978)

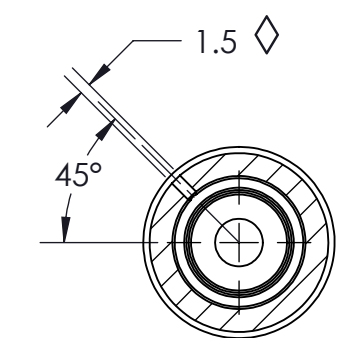


SECTION C-C SCALE 1:2

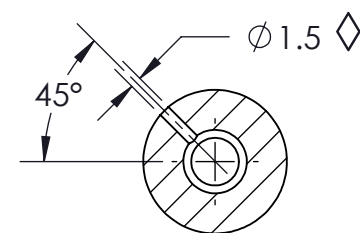
REVISIONS			
REV.	DESCRIPTION	DATE	APPROVED
A	DRAWING CREATED	5/10/2011	JEC



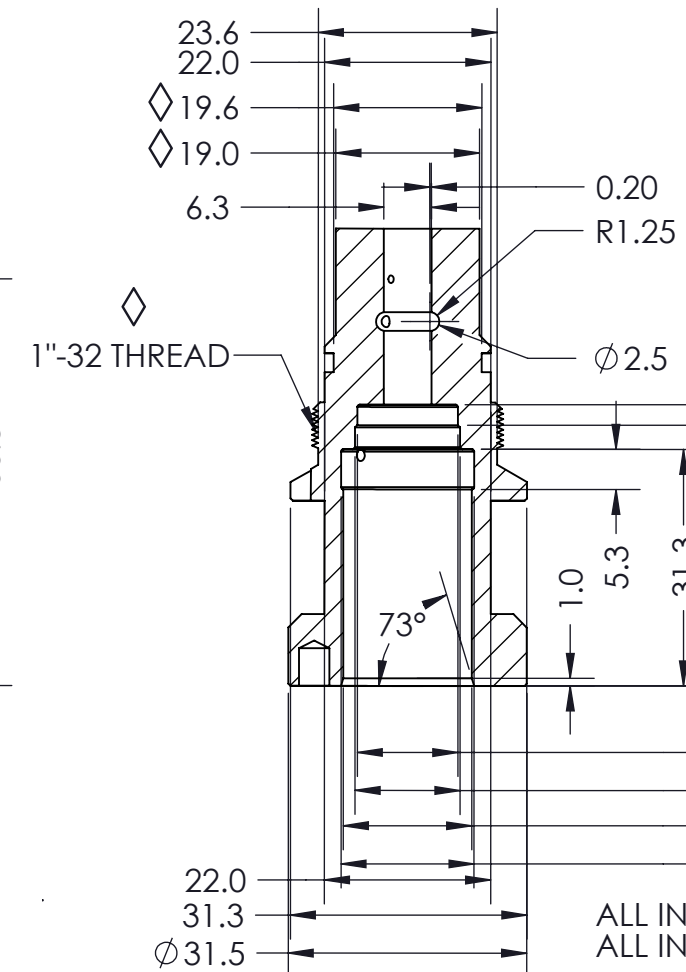
SECTION E-E SCALE 1:1



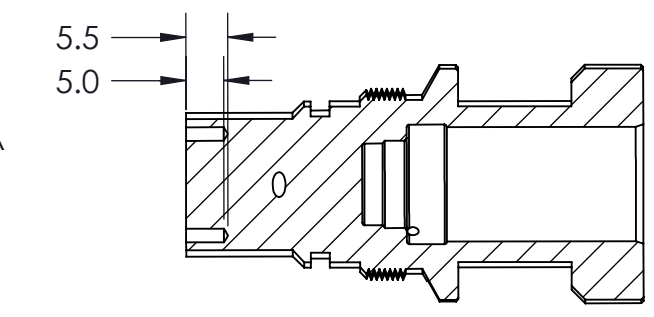
SECTION G-G SCALE 1:1



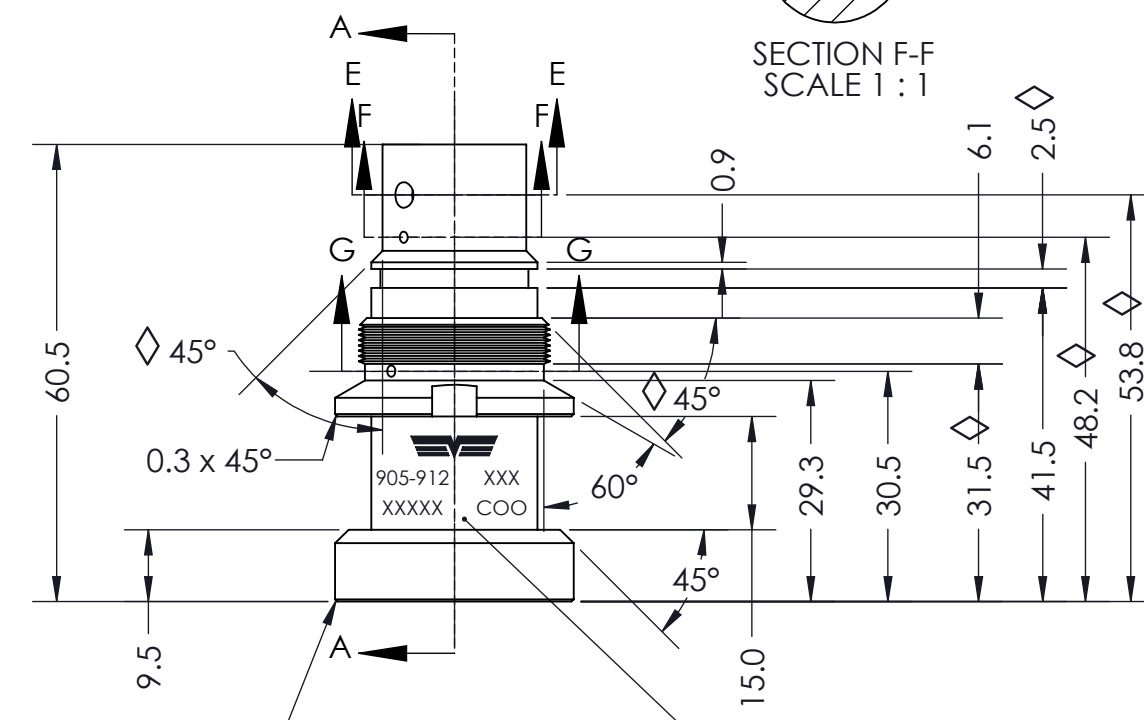
SECTION F-F SCALE 1:1



SECTION A-A SCALE 1:1

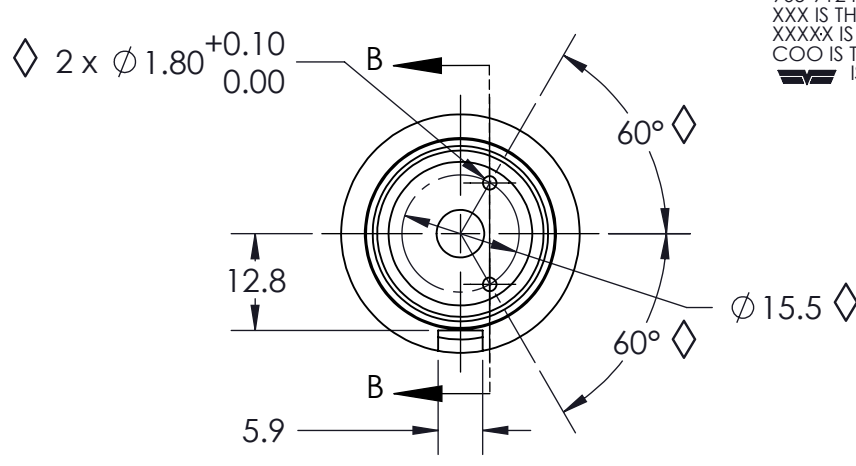
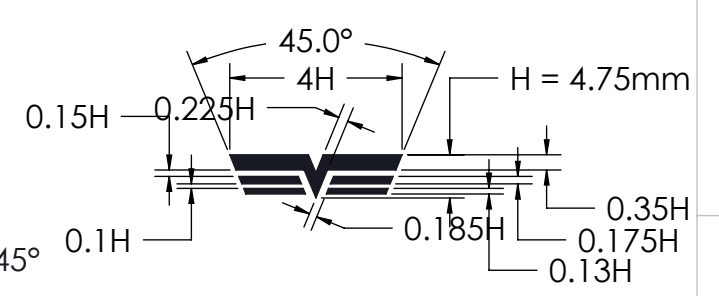


SECTION B-B SCALE 1:1



PART MARKINGS (2mm HIGH TEXT):
 905-912 IS THE PART NUMBER
 XXX IS THE VENDOR CODE
 XXXXX IS THE JULIAN DATE CODE
 COO IS THE COUNTRY OF ORIGIN
 IS THE DORMAN LOGO

NOTES:
 1) PART MASS: 140g
 2) PART MUST BE PLACED IN A SEALED POLYBAG, MINIMUM THICKNESS 0.05mm



<p>-USE THIS SYMBOL TO IDENTIFY AND CHARACTERISTIC RELEVANT TO FIT AND FUNCTION</p> <p>-USE THIS SYMBOL TO IDENTIFY AND CHARACTERISTIC RELEVANT TO SAFETY OR COMPLIANCE TO SAFETY REGULATIONS</p>	<p>DORMAN AGREEMENT APPROVED PRINT CONSTITUTES DORMAN AGREEMENT TO EXTERNAL ENVELOPE DIMENSIONS, MATERIAL, SPECIFICATIONS AND INTERFACE DIMENSIONS TO MATING PARTS. VENDOR IS RESPONSIBLE FOR FUNCTIONALITY AND PERFORMANCE OF THE PRODUCT, WHICH IS NOT INCLUDED IN THIS APPROVAL AGREEMENT.</p>	<p>UNLESS OTHERWISE SPECIFIED DIMENSIONS ARE IN MILLIMETERS</p> <p>TOLERANCES: <i>Metric</i> No decimals: +/- 0.5 1 place decimal: +/- 0.2 2 place decimal: +/- 0.1</p> <p><i>Inch</i> Fractional: +/- 1/64 (.0156in) 2 place decimal: +/- .010 3 place decimal: +/- .005</p> <p>Angular: +/- 1/2°</p>	<table border="1"> <tr> <td>NAME</td> <td>DATE</td> </tr> <tr> <td>JEC</td> <td>5/10/2011</td> </tr> </table>	NAME	DATE	JEC	5/10/2011	<p>DORMAN PRODUCTS 3400 E. Walnut St, Colmar, PA, 18915 Phone: (215)-997-1800 www.DormanProducts.com</p>
	NAME	DATE						
JEC	5/10/2011							
<p>-ZINC PLATED COMPONENTS PLATED PER ASTM B633-07, SERVICE CONDITION SC2, TYPE II, CHROMATE TO USE TRIVALENT CHROMIUM. (HEXAVALENT CHROMIUM NOT PERMITTED)</p>	<p>PROPRIETARY AND CONFIDENTIAL THE INFORMATION CONTAINED IN THIS DRAWING IS THE SOLE PROPERTY OF DORMAN PRODUCTS. ANY REPRODUCTION IN PART OR AS A WHOLE WITHOUT THE WRITTEN PERMISSION OF DORMAN PRODUCTS IS PROHIBITED.</p>	<p>INTERPRET GEOMETRIC TOLERANCING PER: ASME Y14.5M 1994</p> <p>MATERIAL UNS G41200 PER SAE J 404</p> <p>FINISH PLAIN, HARDNESS: HRC 50-60</p>	<p>PROJECTION: FIRST ANGLE</p>	<p>TITLE: BODY BARREL HOLDER</p>				
STATE:			<table border="1"> <tr> <td>DWG. NO.</td> <td>REV</td> </tr> <tr> <td>60905912</td> <td>A</td> </tr> </table>	DWG. NO.	REV	60905912	A	<p>SCALE 1:1 SHEET 1 OF 1</p>
DWG. NO.	REV							
60905912	A							