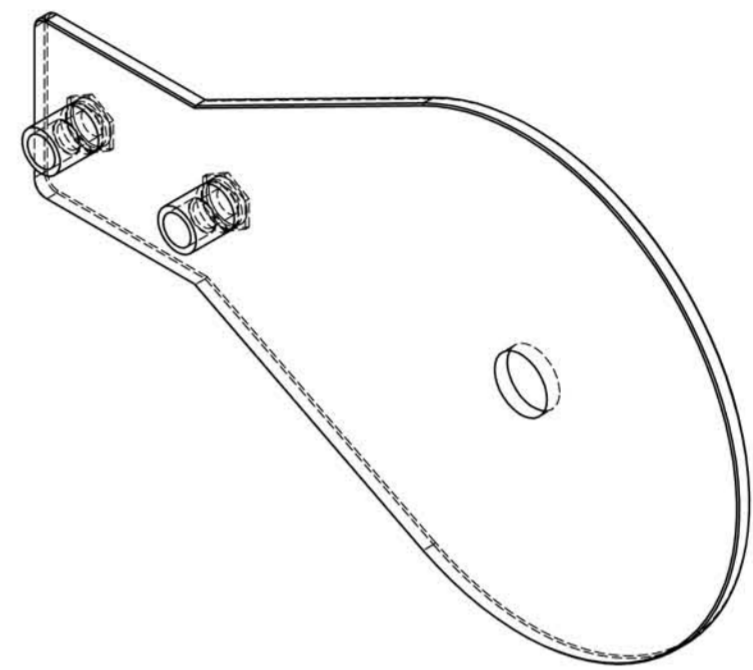
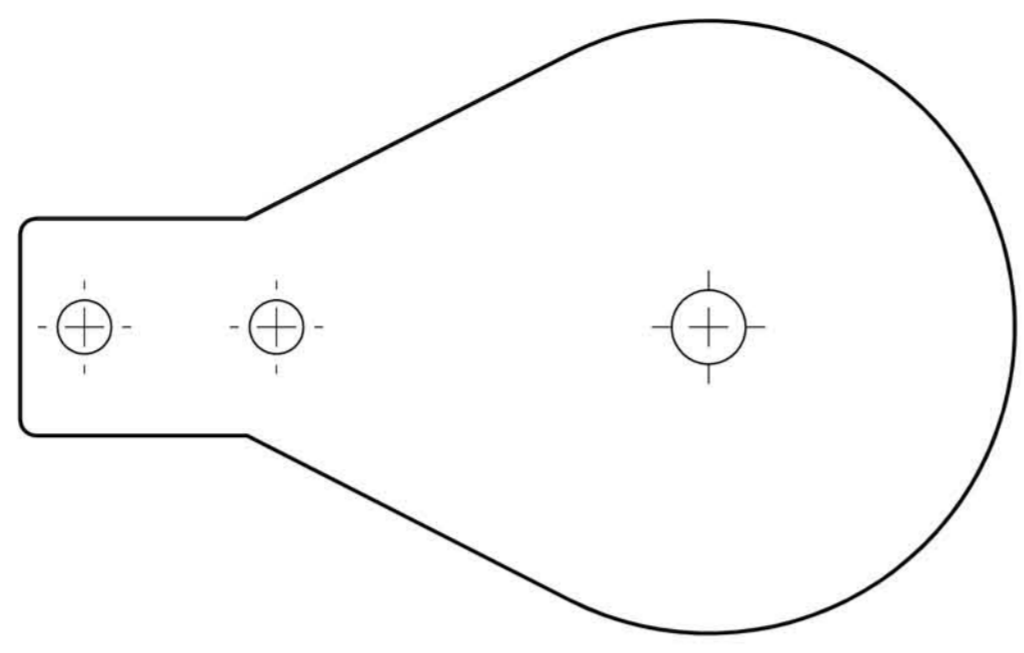
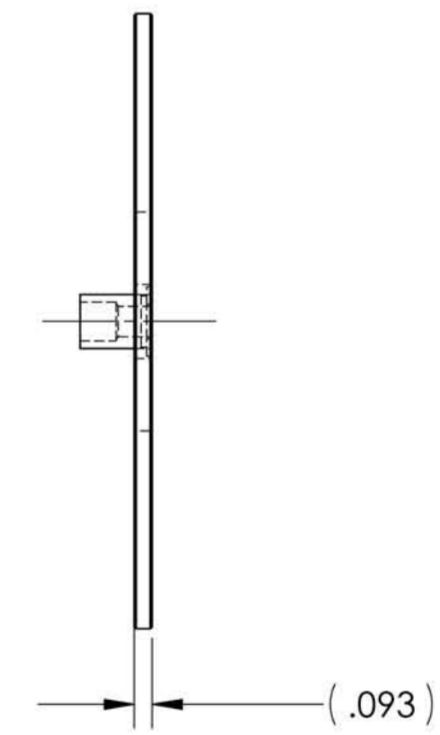
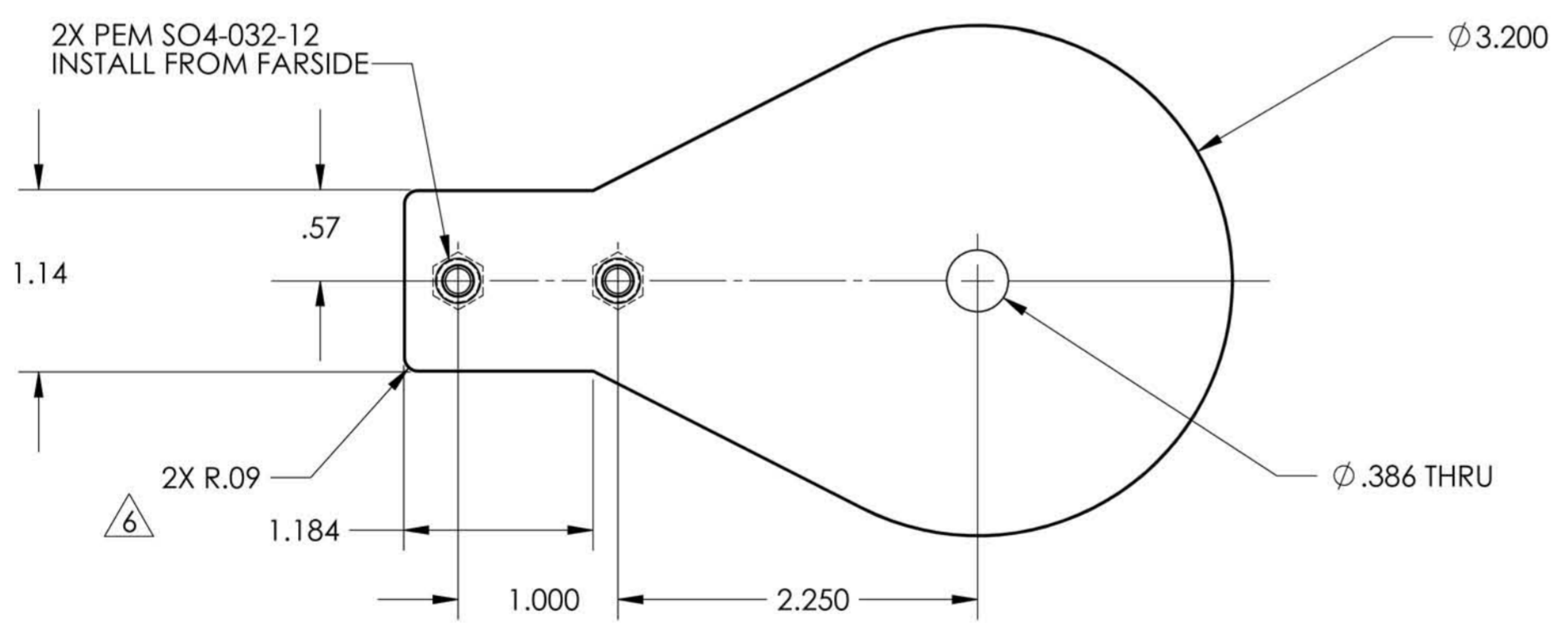
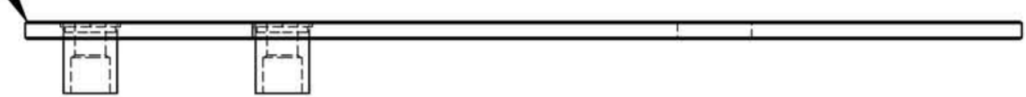


REV.	DESCRIPTION	DATE	ECO #	BY	APRV'D
0	ORIGINATED	05/05/09	----	---	
1	UPDATES	06/03/09		JEG	
2	ADDED 2X PEMNUTS, DIM 1.184 WAS 1.094	06/22/09	7516	JEG	
3	ADDED FLANGE RE-INFORCEMENT	08/14/09	7526	MJL	
4	REMOVED FLANGE; REPLACES PEM NUTS WITH PEM STANDOFFS; ADDED BREAK DIM	08/19/09	7533	MJL	
5	CHANGED MATERIAL FROM 316SS TO 304SS	09/17/09	7555	JAP	
6	2X R.09 WAS 4X R.09	09/29/09	7568	JAP	
7	CHANGED SHARP EDGE FROM .010 FILLET TO .005 RADIUS & ADDED FINISH NOTE	11/04/09	7588	JHB	



BREAK ALL SHARP EDGES WITH MINIMUM 0.005" CHAMFER OR RADIUS.



- NOTES:
- REMOVE ALL BURRS.
 - FINISH: PRIOR TO STANDOFF INSTALL, TUMBLE WITH SMALL MEDIA CERAMIC FOR 1/2 HOUR MINIMUM.



UNLESS OTHERWISE SPECIFIED DIMENSIONS ARE IN INCHES TOLERANCE ARE:		DO NOT SCALE THIS DRAWING		10895 NW 50TH STREET SUNRISE FL 33351 PHONE: 954-746-0547 FAX: 954-746-3001	
DECIMALS .XX ± .01 .XXX ± .005	FRACTIONS ± 1/64	ANGLES ± 0°30'	DRAWN J. GRAVEL	DATE 05/05/09	TITLE RESISTANCE PLATE
REMOVE BURRS & SHARP EDGES			APPROVED	DATE	SIZE C
ALL MACHINED SURFACES ✓			PROPRIETARY AND CONFIDENTIAL THE INFORMATION CONTAINED IN THIS DRAWING IS THE SOLE PROPERTY OF J&L INDUSTRIES INC. ANY REPRODUCTION IN PART OR AS A WHOLE WITHOUT THE WRITTEN PERMISSION OF J&L INDUSTRIES INC IS PROHIBITED		DRAWING NUMBER dci124817
MATERIAL .09 THK 304 STAINLESS STEEL			FINISH SEE NOTES		REV. 7
			SCALE: 1:1		SHEET 1 OF 1