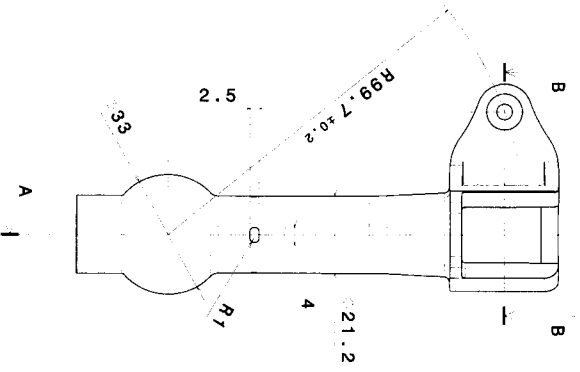
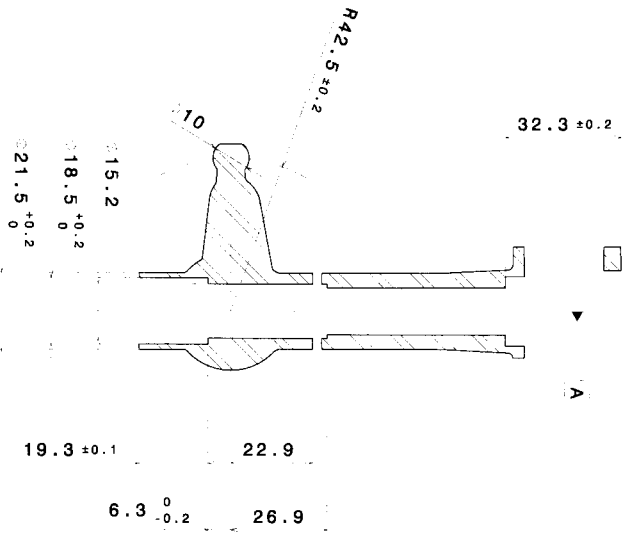


34.1 ±0.2

SEZIONE A-A
SECTION A-A

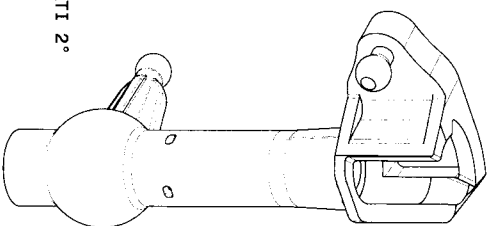


13.2



SEZIONE B-B
SECTION B-B

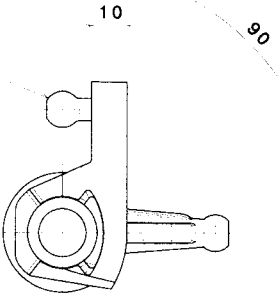
VISTA ISO
ISO VIEW



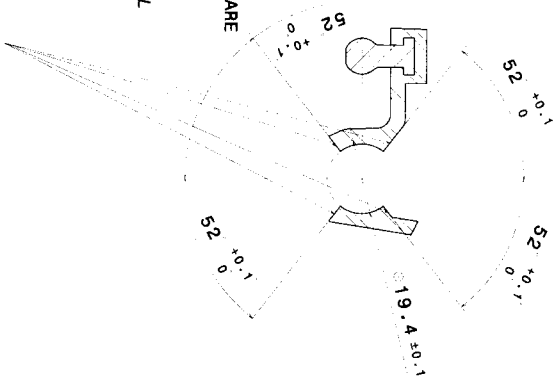
NOTE/NOTES:

- 1 - ANGOLI DI SPOGLIA NON MATEMATIZZATI 2°
- 1 - UNDIMENSIONED DRAFT ANGLES: 2°
- 1 - RAGGI NON MATEMATIZZATI R 0.5
- 2 - UNDIM RADIUS: R 0.5
- 3 - PER QUOTE MANCANTI FARE RIFERIMENTO AL MODELLO MATEMATICO
- 3 - FOR MISSING DIMS REFER TO 3D DATA
- 4 - IL PARTICOLARE DEVE RISULTARE PRIVO DI BAVE
- 4 - PART MUST BE WITHOUT SPLIT LINES (<0.1) AND BLOWS
- 5 - INIEZIONE CAPILLARE PRIVA DI TESTIMONE
- 5 - INJECTION POINT WITHOUT BURR
- 6 - TEMPERATURA DI ESERCIZIO -40°C + 85°C
- 6 - WORKING T: -40°C +85°C
- 7 - MARCATURA RICICLAGGIO SECONDO VDA 260
- 7 - RECYCLING MARKING ACCORDING TO NORM VDA 260

SHIFT SPHERE
03-013-W76-000



- SUPERFICIE OTTENUTA MEDIANTE RILAVORAZIONE MECCANICA Ra 2
- LE 4 SUPERFICIE DEVONO PRESENTARE SCORRIMENTO SENZA GIOCO CON IL DIS. 03-008-W76-001
- SURFACE OBTAINED BY MECHANICAL REMORKING Ra 2
- THESE 4 SURFACES MUST SLIDE WITHOUT FREERPLAY WITH PART 03-008-W76-001



<p>03-008-W76-002</p> <p>OVERMOULDING LEVER DRIVER</p> <p>ALSI9C03 ALUMINIUM EN 1706</p>		<p>W246 - W176</p> <p>101g</p> <p>1:1</p> <p>A2</p> <p>BACINO</p> <p>BACINO</p> <p>SALMOIRAGHI</p>
<p>03-008-W76-002</p> <p>OVERMOULDING LEVER DRIVER</p> <p>ALSI9C03 ALUMINIUM EN 1706</p>		<p>W246 - W176</p> <p>101g</p> <p>1:1</p> <p>A2</p> <p>BACINO</p> <p>BACINO</p> <p>SALMOIRAGHI</p>